



DISTRIBUTED BY:

Levi Sink Co

PO Box 8 | 202 Williams Street

Elberton, GA 30635

www.levisinkco.com

706-213-7715



TOOLS CATALOGUE

2021-2022

CNC Tooling
Edge Polishers
Bridge Saws



NICOLAI
D I A M A N T

A FAMILY COMPANY FOR YOUR GLOBAL BUSINESS

Table of Content

What You'll find inside

Fingerbits	3
Coring Bits	4
Corner Breakers	5
Premium Straight Edge (Kitchen Tops)	6
45° Mitre System	7
CrownMills / Stubbing Wheels / Flush Fit	8
Dm 60 Wheels	10
Dm 60 Wheels (J and DJ special profiles)	18
Dm 40 Wheels	20
Dm 20 1/2 GAS Wheels	22
Dm 10 1/2 GAS Wheels	26
Tools for Porcelains	27
Edge Working Tools for Breton and Comandulli	28
Edge Working Tools for Marmomeccanica and Sassomeccanica	29
Edge Working Tools for Montresor	30
Proglo Wheels (Edge Working Tools)	31
Diamond Blades	33
Tools for 5 Axis and Robots	34
Informative Pages	40

Symbols used in this Catalog



Tools for GRANITE



Tools for ENGINEERED STONE



Tools for MARBLE



Tools for CERAMIC



Tools ADVISED by Nicolai Diamant

SEG

SEGMENTED Tools

FCC

CONTINUOUS RIM Tools

ELE

ELECTROPLATED Tools

JoyLite™

POLISHING Tools



LEFT THREAD Tools



Tools to use WITHOUT WATER *



Tools to use WITH WATER *

* WHEREVER NOT INDICATED
THE USE OF WATER IS MANDATORY

The Items listed in this catalog are subject to change without any prior notice

cut and drill



FINGER BITS

SEGMENTED FINGER BIT

Fitting = 1/2 Gas

Advised parameters. RPM: 4500-5200 FEED: 250/500 mm/min.

CODE	Ø mm	L mm	Z	TWIN	COLOUR	MAT.
AFS90284	Ø20	40	6	Y	YELLOW MET.	GR / ES
AFS90286	Ø21	40	8	Y	RED	GR / ES
AFS94019	Ø23	40	6	Y	WHITE	ES
AFS90268	Ø23	40	6	Y	BLUE	GR / ES
AFS91070	Ø23	40	6	Y	YELLOW	GR
AFS90015	Ø23	40	5	N	BLUE	GR

best selling!



ELECTROPLATED FINGERBITS

Fitting = 1/2 Gas

Advised parameters. RPM: 5000-6000 FEED: 250/500 mm/min.

CODE	Ø mm	L mm	Z	TWIN	COLOUR	MAT.
AFE80010	Ø16	40	-	N	MET	MR

SMALL DIAMETER FINGER BIT

Seg, Fitting = 1/2 Gas

Advised parameters. RPM: 4500-5200 FEED: 250/500 mm/min.

CODE	Ø mm	L mm	Z	TWIN	COLOUR	MAT.
DFS31112	Ø18	40	4	N	BLUE	GR
DFS31115	Ø18	40	4	N	YELLOW	ES



SEG FINGERBIT FOR PORCELAIN

Dekton, Lapitec, Neolith, Max Fine

Fitting = 1/2 Gas

DEKTON Lapitec® NEOLITH
Prestigious Italian Surface EXTRAORDINARY SURFACE

CODE	Ø mm	L mm	Z	TWIN	RPM	FEED
AFS90091	Ø16	20	4	N	4500-5200	250-500
AFS90128	Ø20	25	5	N	4500-5500	300-500
AFS90126	Ø20	40	5	N		
AFS90279	Ø23	25	5	Y	4500-5200	250-500
AFS9001H	Ø23	40	5	N	4500-5200	250-500
AFS90272	Ø23	40	6	Y	4500-5200	250-500

SEE PAGE 25 FOR MORE TOOLS



other sizes could be available on request

CORE BITS

cut and drill



NON CORING DRILL BITS

1/2 GAS fitting

CODE	SIZE	FITTING	RPM	FEED	MATERIAL
ATS0503B	Ø6 L50	1/2 Gas	6000	30-35	GR/ES
ATS0803C	Ø8 L50	1/2 Gas	5800	30-35	GR/ES
ATS1003C	Ø10 L50	1/2 Gas	5800	25-30	GR/ES
ATS1203C	Ø12 L50	1/2 Gas	5600	25-30	GR/ES
ATS1503C	Ø15 L50	1/2 Gas	5500	20-25	GR/ES



NON CORING DRILL BITS

Segmented - Shank 10mm

CODE	SIZE	Ø mm	RPM	FEED	MATERIAL
ATS0511B	Ø6 LT85 Lu45	10/5	6000	30-35	GR/ES
ATS0814C	Ø8 LT85 Lu45	10/8	5800	30-35	GR/ES
ATS1014C	Ø10 LT85 Lu45	10/8	5800	25-30	GR/ES
ATS1215C	Ø12 LT85 Lu45	10/10	5600	25-30	GR/ES
ATS1515C	Ø15 LT85 Lu45	10/10	5500	20-25	GR/ES



CONTINUOUS "THIN WALL" CORE BITS

Fitting = 1/2 Gas

CODE	Ø mm	Ø"	L /Lu	RPM	FEED	MATERIAL
APF11020	Ø20	Ø3/4"	90/50	2500	50-100	GR/ES/CR
APF11025	Ø25	Ø1"	90/50	2600	50-100	GR/ES/CR
APF11032	Ø32	Ø1-1/4"	90/50	2400	40-50	GR/ES/CR
APF11035	Ø35	Ø1-3/8"	90/50	2200	40-50	GR/ES/CR
APF11038	Ø38	Ø1-1/2"	90/50	2200	40-50	GR/ES/CR
APF11045	Ø45	Ø1-3/4"	90/50	2200	40-50	GR/ES/CR
APF11050	Ø50	Ø2"	90/50	2000	40-50	GR/ES/CR



HOLDERS

For Non Coring Bits (can also be used for T31)

CODE	FITTING (HOLDER)	FITTING (BIT)
AZT0572B	1/2 Gas MALE	Bore 10
AZT0591A	M14 FEMALE	Bore 10



CORNER BREAKERS

Pre Shaping



SEGMENTED TORNADO CORNER BREAKER

PROFILE Y

Ultra High Speed Stock Removal

CODE	DESCRIPTION	TYPE / POSITION	MAT.
DSS0940S	Y30 - MB7	Segmented / P0	GR/ES
DSS0940C	Y30 - MB5	Segmented / P0	GR/ES
DSS2711Y	Y40 - MB8	Segmented / P0	GR/ES

Min Ø 65 mm / Max Ø 126 mm
RPM: 4800-5000 FEED: 1200/2000 mm/min.



SEGMENTED TORNADO CORNER BREAKER

PROFILE X

Ultra High Speed Stock Removal

CODE	DESCRIPTION	TYPE / POSITION	MAT.
DSS1937S	X40 - MB9	Segmented / G1	GR/ES
on request	X30 - MB7	Segmented / G1	GR/ES

Min Ø 65 mm / Max Ø 92 mm
RPM: 4800-5000 FEED: 1200/2000 mm/min.



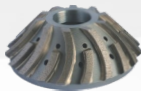
SEGMENTED CORNER BREAKER

PROFILE Y

Ultra High Speed Stock Removal

CODE	DESCRIPTION	TYPE / POSITION	MAT.
ASS0004S	Y40	Segmented / P0	GR/ES
ASS00040	Y30	Segmented / P0	GR/ES

Min Ø 65 mm / Max Ø 146 mm
RPM: 4500 - FEED: 500/700 mm/min.



SEGMENTED CORNER BREAKER

PROFILE X

Ultra High Speed Stock Removal

CODE	DESCRIPTION	TYPE / POSITION	MAT.
ASS0001S	X40	Segmented / P0	GR/ES
ASS00010	X30	Segmented / P0	GR/ES

Min Ø 65mm / Max Ø 90 mm
RPM: 4500 - FEED: 500/700 mm/min.



PREMIUM STRAIGHT EDGE

kitchen top

NICOLAI SUPER Z

*Ultra High Speed Seg. Calibrating Wheels
for Granite & ES*

CODE	Ø mm	H mm	DIST.	RPM	FEED
ASSE4505M3P	Ø80	35	0.8 mm	4500-5500	5000
ASSE4605M3P	Ø80	45	0.8 mm	4500-5500	5000
ASSE5241M3P	Ø50	45	1.6 mm	4500-5500	2500-3800
ASSE5242M3P	Ø40	45	3.5 mm	4500-5500	2000-2500



NICOLAI SEAMING TOOLS

*High Speed Slotted and Continuous Z Wheels
for Granite & ES*

CODE	Ø mm	H mm	RPM	FEED
ASFK4513 G1F ☺	Ø80	35	4500-5000	3000
ASFK4515 G2F ☺	Ø80	35	4500-5000	4000
ASFK4520 G3	Ø80	35	4500-5000	4000
ASFK4525 G4 ☺	Ø80	35	4500-5000	3000
ASFK4613 G1F ☺	Ø80	45	4500-5000	3000
ASFK4615 G2F ☺	Ø80	45	4500-5000	4000
ASFK4620 G3	Ø80	45	4500-5000	4000
ASFK4625 G4 ☺	Ø80	45	4500-5000	3000

Advised Sequence: G1F + G2F + G4
other sizes could be available on request



SINK WHEELS

*Electroplated 1/2 Gas
for Granite & ES*

CODE	Ø mm	H mm	GRIT	RPM	FEED
DfE3982C	Ø50	50	Grit 1	5000-5500	600-800
DfE3982H	Ø50	50	Grit 2	5000-5500	600-800
DfE3982A	Ø50	50	Grit 3	4800-5200	800-1000



45° MITRE SYSTEM



profiling



"TORNADO" CORNERBREAKER

Min Ø60 / Max Ø 146 mm

STEP	CODE	SLAB	MATERIAL	RPM	FEED
0	D5S0940C	20 mm	GR/ES	4800-5000	1200-2000 mm/min.

Advisable the use of a Tornado before the cornerbreaker step 1 - 2

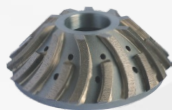


SEGMENTED CORNERBREAKER

Min Ø60 / Max Ø 146 mm

STEP	CODE	SLAB	MATERIAL	RPM	FEED
1	ASS00040	30 mm	GR/ES	4500	500-700 mm/min.

For MARBLE you can use the Electroplated wheel D1 (D5E0940C)

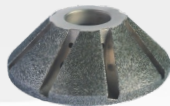


ELECTROPLATED CORNERBREAKER

Min Ø60 / Max Ø 146 mm

STEP	CODE	SLAB	MATERIAL	RPM	FEED
2	D5E0940H	30 mm	MR	4500	800-1000 mm/min.

For MARBLE you can use also the coarser D1 (D5E0940C)





Ø20 CROWN MILL (1)

SEG. to cut sink for CNC saws

Ø10 NO CORING DRILL BIT (2)

for Engraving (both for Granite & ES)

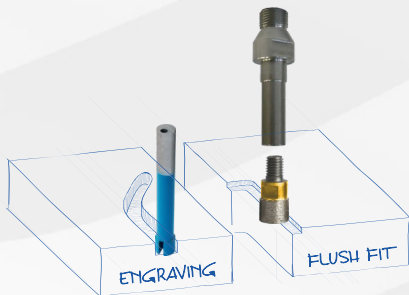
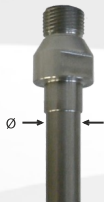
CODE	Ø mm	H mm	FITTING	RPM	FEED
CFS4C077 (1)	Ø20	20	M12	4800-5500	400-1000
CFS4C067 (1)	Ø20	20	M12 LEFT	4800-5500	400-1000
ETS00017 (2)	Ø10	75	10X75	6000-7000	400-600



TOOL HOLDER For Ø20 CROWN MILLS

1/2 Gas > M10/M12

CODE	Ø mm	L mm	FIT.(TOOL)	FIT.(MACH.)
AZT1518G	Ø17	30	M10	1/2 GAS
AZT1518E ☺	Ø17	30	M12	1/2 GAS
AZT1518B	Ø17	60	M10	1/2 GAS
AZT1518A ☺	Ø17	60	M12	1/2 GAS
AZT1518F	Ø18	100	M12	1/2 GAS
AZT1518T	Ø18	120	M12	1/2 GAS



STUBBING WHEELS / FLUSH FIT

kitchen top



TURBO CROWN WHEEL

*Breton, Brembana, Denver, Intermac, Ravelli
Park Industries, Northwood*

CODE	Ø mm	H mm	FITTING	RPM	FEED	MATERIAL
AMC00092	Ø92	30	B50 - 3+3H	4300-4500	400-600	GR/ES
AMC00095	Ø92	30	B50 - 3+3H	4300-4500	400-600	MR



SEGMENTED CROWN WHEEL

*Breton, Brembana, Denver, Intermac, Ravelli
Park Industries, Northwood*

CODE	Ø mm	H mm	FITTING	RPM	FEED	MATERIAL
AMS00030	Ø85	20	B50 - 3+3H	4300-4500	400-600	GR/ES
AMS00089	Ø88	20	B50 - 3+3H		mm/min.	GR/ES
DSS38485	Ø88	30	B50 - 3+3H			GR/ES



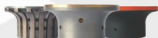
For Thibaut

CODE	Ø mm	H mm	FITTING	RPM	FEED	MATERIAL
AMS00050	Ø150	15	B60 - 6+6H	4300-4500	400-500	GR/ES
AMS00055	Ø150	20	B60 - 6+6H		mm/min.	GR/ES

DM60 WHEELS (Outside 60/80/120mm)

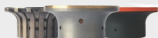
profiling **60**

A



A	2 cm - r10	3 cm - r15	4 cm - r20
SEG G1	ASS10005	ASS10105	ASS10205
CR G3	ASF10020	ASF10120	ASF10220
CR G4	ASF10025	ASF10125	ASF10225
CR G5	ASF10030	ASF10130	ASF10230
JLT G6	CSLA2099935606	CSLA3099935606	CSLA4099935606
JLT G7	CSLA2099935607	CSLA3099935607	CSLA4099935607
JLT G8	CSLA2099935608	CSLA3099935608	CSLA4099935608

A r5 *VG* ☺



A r5	2 cm	3 cm	4 cm
SEG G1	-	ASF17013T2	
CR G3	-	ASF17020T2	
CR G4	-	ASF17025T2	
CR G5	-	ASF17030T2	
CR G6F	-	ASF17035T2	
JLT G6	CSLA20R5235606	CSLA30R5235606	CSLA40R5235606
JLT G7	CSLA20R5235607	CSLA30R5235607	CSLA40R5235607
JLT G8	CSLA20R5235608	CSLA30R5235608	CSLA40R5235608

B



B	2 cm	3 cm	4 cm
SEG G1	ASS10305	ASS10405	ASS10505
CR G3	ASF10320	ASF10420	ASF10520
CR G4	ASF10325	ASF10425	ASF10525
CR G5	ASF10330	ASF10430	ASF10530
JLT G6	CSLB2099935606	CSLB3099935606	CSLB4099935606
JLT G7	CSLB2099935607	CSLB3099935607	CSLB4099935607
JLT G8	CSLB2099935608	CSLB3099935608	CSLB4099935608

D



D	2 cm	3 cm	4 cm
SEG G1	ASS10605	ASS10705	ASS10805
CR G3	ASF10620	ASF10720	ASF10820
CR G4	ASF10625	ASF10725	ASF10825
CR G5	ASF10630	ASF10730	ASF10830
JLT G6	CSLD2099935606	CSLD3099935606	CSLD4099935606
JLT G7	CSLD2099935607	CSLD3099935607	CSLD4099935607
JLT G8	CSLD2099935608	CSLD3099935608	CSLD4099935608

DM60 WHEELS (Outside 60/80/120mm)



E		2 cm	3 cm	4 cm
SEG G1	ASS10905		ASS11005	ASS11105
CR G3	ASF10920		ASF11020	ASF11120
CR G4	ASF10925		ASF11025	ASF11125
CR G5	ASF10930		ASF11030	ASF11130
JLT G6	CSLE2099935606		CSLE3099935606	CSLE4099935606
JLT G7	CSLE2099935607		CSLE3099935607	CSLE4099935607
JLT G8	CSLE2099935608		CSLE3099935608	CSLE4099935608



F		2 cm	3 cm	4 cm
SEG G1	ASS11205		ASS11305	ASS11405
CR G3	ASF11220		ASF11320	ASF11420
CR G4	ASF11225		ASF11325	ASF11425
CR G5	ASF11230		ASF11330	ASF11430
JLT G6	CSLF2099935606		CSLF3099935606	CSLF4099935606
JLT G7	CSLF2099935607		CSLF3099935607	CSLF4099935607
JLT G8	CSLF2099935608		CSLF3099935608	CSLF4099935608



FB		2 cm	3 cm	4 cm
SEG G1	-		DSS39065	DSS24655
CR G3	-		DSG39063	DSG24653
CR G4	-		DSG39064	DSG24654
CR G5	-		DSG39065	DSG24655
JLT G6	-		CSL53054935606	CSL54054935606
JLT G7	-		CSL53054935607	CSL54054935607
JLT G8	-		CSL53054935608	CSL54054935608



FS		2 cm	3 cm	4 cm
SEG G1	-		DSS52195	-
CR G3	-		DSG52193	-
CR G4	-		DSG52194	-
CR G5	-		DSG52195	-
JLT G6	-		CSLFS3099935606	-
JLT G7	-		CSLFS3099935607	-
JLT G8	-		CSLFS3099935608	-

DM60 WHEELS (Outside 60/80/120mm)

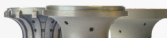
profiling



FV	3 cm	4 cm	5 cm
SEG G1	DSS19485	DSS19545	DSS21155
CR G3	DSG19483	DSG19543	DSG21153
CR G4	DSG19484	DSG19544	DSG21154
CR G5	DSG19485	DSG19545	DSG21155
JLT G6	CSLF15V1535606	CSLF20V2035606	CSLF25V2535606
JLT G7	CSLF15V1535607	CSLF20V2035607	CSLF25V2535607
JLT G8	CSLF15V1535608	CSLF20V2035608	CSLF25V2535608



FZ	2 cm	3 cm	4 cm
SEG G1	-	DSS05075	ASS18705
CR G3	-	DSG05073	ASF18720
CR G4	-	DSG05074	ASF18725
CR G5	-	DSG05075	ASF18730
JLT G6	-	CSLF2010935606	CSLF2020935606
JLT G7	-	CSLF2010935607	CSLF2020935607
JLT G8	-	CSLF2010935608	CSLF2020935608



H	2 cm	3 cm	4 cm
SEG G1	ASS11505	ASS11605	ASS11705
CR G3	ASF11520	ASF11620	ASF11720
CR G4	ASF11525	ASF11625	ASF11725
CR G5	ASF11530	ASF11630	ASF11730
JLT G6	CSLH2099935606	CSLH3099935606	CSLH4099935606
JLT G7	CSLH2099935607	CSLH3099935607	CSLH4099935607
JLT G8	CSLH2099935608	CSLH3099935608	CSLH4099935608



I	2 cm	3 cm	4 cm
SEG G1	ASS14805	ASS14905	-
CR G3	ASF14820	ASF14920	-
CR G4	ASF14825	ASF14925	-
CR G5	ASF14830	ASF14930	-
JLT G6	-	-	-
JLT G7	-	-	-
JLT G8	-	-	-

DM60 WHEELS (Outside 60/80/120mm)

profiling

60



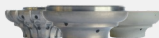
L	2 cm	3 cm	4 cm
SEG G1	ASS11805	ASS11905	ASS12005
CR G3	ASF11820	ASF11920	ASF12020
CR G4	ASF11825	ASF11925	ASF12025
CR G5	ASF11830	ASF11930	ASF12030
JLT G6	CSLL2099935606	CSLL3099935606	-
JLT G7	CSLL2099935607	CSLL3099935607	-
JLT G8	CSLL2099935608	CSLL3099935608	-



LV	2 cm	3 cm	4 cm
SEG G1	-	DSS10865	DSS30225
CR G3	-	DSG10863	DSG30223
CR G4	-	DSG10864	DSG30224
CR G5	-	DSG10865	DSG30225
JLT G6	-	CSLL15V1535606	CSLL20V2035606
JLT G7	-	CSLL15V1535607	CSLL20V2035607
JLT G8	-	CSLL15V1535608	CSLL20V2035608



M	2 cm	3 cm	4 cm
SEG G1	ASS12105	ASS12205	ASS12305
CR G3	ASS12120	ASS12220	ASS12320
CR G4	ASS12125	ASS12225	ASS12325
CR G5	ASS12130	ASS12230	ASS12330
JLT G6	-	CSLM3099935606	CSLM4099935606
JLT G7	-	CSLM3099935607	CSLM4099935607
JLT G8	-	CSLM3099935608	CSLM4099935608



O	2 cm	3 cm	4 cm
SEG G1	ASS12405	ASS12505	ASS12605
CR G3	ASF12420	ASF12520	ASF12620
CR G4	ASF12425	ASF12525	ASF12625
CR G5	ASF12430	ASF12530	ASF12630
JLT G6	-	CSLO3099935606	CSLO4099935606
JLT G7	-	CSLO3099935607	CSLO4099935607
JLT G8	-	CSLO3099935608	CSLO4099935608

DM60 WHEELS (Outside 60/80/120mm)

profiling



OG	2 cm	3 cm	4 cm
SEG G1	DSS33525	DSS32725	-
CR G3	DSG33523	DSG32723	-
CR G4	DSG33524	DSG32724	-
CR G5	DSG33525	DSG32725	-
JLT G6	CSLOG209935606	CSLOG309935606	-
JLT G7	CSLOG209935607	CSLOG309935607	-
JLT G8	CSLOG209935608	CSLOG309935608	-



R5 also available!



Option: Z G6F
ASF14535 (3cm)
ASF14635 (4cm)

T	2 cm	3 cm	4 cm
SEG G1		DSS21165	
CR G1F		DSG2116A	
CR G3		DSG21163	
CR G4		DSG21164	
CR G5		DSG21165	
CR G6F		DSG21166	
JLT G6		CSLT30R6935606	
JLT G7		CSLT30R6935607	
JLT G8		CSLT30R6935608	



V	2 cm	3 cm	4 cm
SEG G1	ASS13005	ASS13105	ASS13205
CR G3	ASF13020	ASF13120	ASF13220
CR G4	ASF13025	ASF13125	ASF13225
CR G5	ASF13030	ASF13130	ASF13230
JLT G6	CSLV2099935606	CSLV3099935606	CSLV4099935606
JLT G7	CSLV2099935607	CSLV3099935607	CSLV4099935607
JLT G8	CSLV2099935608	CSLV3099935608	CSLV4099935608



Z	2 cm	3 cm	4 cm
SEG G1	-	ASS14505	ASS14605
CR G1F	-	ASF14513	ASF14613
CR G3	-	ASF14520	ASF14620
CR G4	-	ASF14525	ASF14625
CR G5	-	ASF14530	ASF14630
CR G6F	-	ASF14535	ASF14635
JLT G6	-	CSLZ3599935606	CSLZ4599935606
JLT G7	-	CSLZ3599935607	CSLZ4599935607
JLT G8	-	CSLZ3599935608	CSLZ4599935608

DM60 WHEELS (Outside 60/80/120mm)



Q	2 cm	3 cm	4 cm
SEG G1	ASS16005	ASS16105	ASS16205
CR G3	ASF16020	ASF16120	ASF16220
CR G4	ASF16025	ASF16125	ASF16225
CR G5	ASF16030	ASF16130	ASF16230
JLT G6	CSLQ2099935606	CSLQ3099935606	CSLQ4099935606
JLT G7	CSLQ2099935607	CSLQ3099935607	CSLQ4099935607
JLT G8	CSLQ2099935608	CSLQ3099935608	CSLQ4099935608



Option: Z G6F
ASF14535 (3cm)
ASF14635 (4cm)

T r3	2 cm	3 cm	4 cm
SEG G1	ASS12705T2	ASS18305T2	DSS32545T2
CR G1F	ASF12713T2	ASF18313T2	DSG32544T2
CR G3	ASF12720T2	ASF18320T2	DSG32543T2
CR G4	ASF12725T2	ASF18325T2	DSG32544T2
CR G5	ASF12730T2	ASF18330T2	DSG32545T2
CR G6F	ASF12735T2	ASF18335T2	DSG32546T2
JLT G6	CSLT203T235606	CSLT30R3235606	CSLT403T235606
JLT G7	CSLT203T235607	CSLT30R3235607	CSLT403T235607
JLT G8	CSLT203T235608	CSLT30R3235608	CSLT403T235608



V	5 cm	6 cm	8 cm
SEG G0	ASS00025	ASS00025	DSS26380
SEG G1	ASS13305	ASS13405	DSS26385
CR G3	ASF13320	ASF13420	DSS26383 SEG
CR G4	ASF13325	ASF13425	DSS26384 SEG
CR G5	ASF13330	ASF13430	DSS26385 SEG
JLT G6	CSLV5099935606	CSLV6099935606	
JLT G7	CSLV5099935607	CSLV6099935607	
JLT G8	CSLV5099935608	CSLV6099935608	



Option: Z G6F
ASF14535 (3cm)
ASF14635 (4cm)

ZR	2 cm r5	3 cm r5	4 cm r6
SEG G1	ASS19405	ASS17005	ASS17805
CR G1F	-	ASF17013	ASF17813
CR G3	ASF19420	ASF17020	ASF17820
CR G4	ASF19425	ASF17025	ASF17825
CR G5	ASF19430	ASF17030	ASF17830
CR G6F	-	ASF17035	ASS17835
JLT G6	CSLA30R5935606	CSLA30R5935606	CSLA40R6935606
JLT G7	CSLA30R5935607	CSLA30R5935607	CSLA40R6935607
JLT G8	CSLA30R5935608	CSLA30R5935608	CSLA40R6935608

DM60 WHEELS (Outside 60/80/120mm)

profiling

60

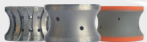
ZS



Option: Z G6F
ASF14535 (3cm)
ASF14635 (4cm)

ZS	2 cm	3 cm (31x7mm)	4 cm (41x7mm)
SEG G1	-	DS514255	DSS47405
CR G1F	-	DSG1425A	DSG4740A
CR G3	-	DSG14253	DSG47403
CR G4	-	DSG14254	DSG47404
CR G5	-	DSG14255	DSG47405
CR G6F	-	DSG14256	DSG47406
JLT G6	-	CSLZS300735606	CSLZS400735606
JLT G7	-	CSLZS300735607	CSLZS400735607
JLT G8	-	CSLZS300735608	CSLZS400735608

1



1	2 cm	3 cm	4 cm
SEG G1	-	ASS16405	ASS16505
CR G3	-	ASF16420	ASF16520
CR G4	-	ASF16425	ASF16525
CR G5	-	ASF16430	ASF16530
JLT G6	-	CSL13099935606	CSL14099935606
JLT G7	-	CSL13099935607	CSL14099935607
JLT G8	-	CSL13099935608	CSL14099935608

3



3	2 cm	3 cm	4 cm
SEG G1	ASS13905	ASS14005	ASS14105
CR G3	ASF13920	ASF14020	ASF14120
CR G4	ASF13925	ASF14025	ASF14125
CR G5	ASF13930	ASF14030	ASF14130
JLT G6	CSL32099935606	CSL33099935606	CSL34099935606
JLT G7	CSL32099935607	CSL33099935607	CSL34099935607
JLT G8	CSL32099935608	CSL33099935608	CSL34099935608

4



Option: Z G6F
ASF14535 (3cm)
ASF14635 (4cm)

4	2 cm	3 cm	4 cm
SEG G1	ASS14205	ASS14305	ASS14405
CR G1F	-	ASF14313	ASF14413
CR G3	ASF14220	ASF14320	ASF14420
CR G4	ASF14225	ASF14325	ASF14425
CR G5	ASF14230	ASF14330	ASF14430
CR G6F	-	ASF14335	ASF14435
JLT G6	CSL42099935606	CSL43099935606	CSL44099935606
JLT G7	CSL42099935607	CSL43099935607	CSL44099935607
JLT G8	CSL42099935608	CSL43099935608	CSL44099935608

DM60 WHEELS (Outside 60/80/120mm)

FV_{40S}

FV40S 4 cm

SEG G1	DSS52225
CR G3	DSG52223
CR G4	DSG52224
CR G5	DSG52225
JLT G6	CSLFFV40S935606
JLT G7	CSLFFV40S935607
JLT G8	CSLFFV40S935608

MD₃₀

MD30 3 cm

SEG G1	DSS52205
CR G3	DSG52203
CR G4	DSG52204
CR G5	DSG52205
JLT G6	CSLMD309935606
JLT G7	CSLMD309935607
JLT G8	CSLMD309935608

MQ₆₀

MQ60 6 cm

SEG G1	DSS52235
CR G3	DSG52233
CR G4	DSG52234
CR G5	DSG52235
JLT G6	CSLMQ609935606
JLT G7	CSLMQ609935607
JLT G8	CSLMQ609935608

custom profiles could be available on request

J Series

Single 2mm chamfer

A30J

STEP	TYPE	CODE A30J (R3)	CODE A30J (R5)	CODE A30J (R10)	CODE A30J (R15)
1	Segmented G1	DSS27125	ASS17005	ASS10805	ASS10105
2	Continuous G3	DSG66783	DSG69523	DSG47763	DSG47723
3	Continuous G4	DSG66784	DSG69524	DSG47764	DSG47724
4	Continuous G5	DSG66785	DSG69525	DSG47765	DSG47725
5	JoyLite™ G6	CSLA30J9335606	CSLA30J1035606	CSLA30J1035606	CSLA30J9935606
6	JoyLite™ G7	CSLA30J9935607	CSLA30J1035607	CSLA30J1035607	CSLA30J9935607
7	JoyLite™ G8	CSLA30J9935608	CSLA30J1035608	CSLA30J1035608	CSLA30J9935608

B20J

STEP	TYPE	CODE B20J
1	Segmented G1	ASS10305
2	Continuous G3	DSG69043
3	Continuous G4	DSG69044
4	Continuous G5	DSG69045
5	JoyLite™ G6	CSLB20J9935606
6	JoyLite™ G7	CSLB20J9935607
7	JoyLite™ G8	CSLB20J9935608

B30J

STEP	TYPE	CODE B30J
1	Segmented G1	ASS10405
2	Continuous G3	DSG55853
3	Continuous G4	DSG55854
4	Continuous G5	DSG55855
5	JoyLite™ G6	CSLB30J9935606
6	JoyLite™ G7	CSLB30J9935607
7	JoyLite™ G8	CSLB30J9935608

FZ30J

STEP	TYPE	CODE FZ30J
1	Segmented G1	DSS05075
2	Continuous G3	DSG46663
3	Continuous G4	DSG46664
4	Continuous G5	DSG46665
5	JoyLite™ G6	CSLFZ30J9335606
6	JoyLite™ G7	CSLFZ30J9335607
7	JoyLite™ G8	CSLFZ30J9335608

FZ40J

STEP	TYPE	CODE FZ40J
1	Segmented G1	ASS18705
2	Continuous G3	DSG47823
3	Continuous G4	DSG47824
4	Continuous G5	DSG47825
5	JoyLite™ G6	CSLFZ40J9335606
6	JoyLite™ G7	CSLFZ40J9335607
7	JoyLite™ G8	CSLFZ40J9335608

ZS30J

STEP	TYPE	CODE ZS30J
1	Segmented G1	DSS05085
2	Continuous G3	DSG54543
3	Continuous G4	DSG54544
4	Continuous G5	DSG54545
5	JoyLite™ G6	CSLZS30J9335606
6	JoyLite™ G7	CSLZS30J9335607
7	JoyLite™ G8	CSLZS30J9335608

ZS40J

STEP	TYPE	CODE ZS40J
1	Segmented G1	DSS47405
2	Continuous G3	DSG47833
3	Continuous G4	DSG47834
4	Continuous G5	DSG47835
5	JoyLite™ G6	CSLZS40J7335606
6	JoyLite™ G7	CSLZS40J7335607
7	JoyLite™ G8	CSLZS40J7335608

DM60 WHEELS (Outside 60/80/120mm)



DJ Series

Double 2mm chamfer, top and bottom

FZ30DJ

STEP	TYPE	CODE FZ30DJ
1	Segmented G1	DSS05075
2	Continuous G3	DSG57973
3	Continuous G4	DSG57974
4	Continuous G5	DSG57975
5	JoyLite™ G6	CSLFZ30DJ35606
6	JoyLite™ G7	CSLFZ30DJ35607
7	JoyLite™ G8	CSLFZ30DJ35608

H30DJ

STEP	TYPE	CODE H30DJ
1	Segmented G1	ASS11605
2	Continuous G3	DSG59533
3	Continuous G4	DSG59534
4	Continuous G5	DSG59535
5	JoyLite™ G6	CSLH30DJ935606
6	JoyLite™ G7	CSLH30DJ935607
7	JoyLite™ G8	CSLH30DJ935608

ZS30DJ

STEP	TYPE	CODE ZS30DJ
1	Segmented G1	DSS14255
2	Continuous G3	DSG59583
3	Continuous G4	DSG59584
4	Continuous G5	DSG59585
5	JoyLite™ G6	CSLZS30DJ35606
6	JoyLite™ G7	CSLZS30DJ35607
7	JoyLite™ G8	CSLZS30DJ35608

FZ40DJ

STEP	TYPE	CODE FZ40DJ
1	Segmented G1	ASS18705
2	Continuous G3	DSG47823
3	Continuous G4	DSG47824
4	Continuous G5	DSG47825
5	JoyLite™ G6	CSLFZ40DJ35606
6	JoyLite™ G7	CSLFZ40DJ35607
7	JoyLite™ G8	CSLFZ40DJ35608

QZ40DJ

STEP	TYPE	CODE QZ40DJ	PRICE
1	Segmented G1	DSS54995	
2	Continuous G3	DSG54993	
3	Continuous G4	DSG54994	
4	Continuous G5	DSG54995	
5	LUX Abra G6	DSRS4992	
6	LUX Abra G7	DSRS4994	
7	LUX Abra G8	DSRS4991	

I-30DJ

STEP	TYPE	CODE I-30DJ
1	Segmented G1	ASS16405
2	Continuous G3	DSG60373
3	Continuous G4	DSG60374
4	Continuous G5	DSG60375
5	JoyLite™ G6	CSLI30DJ935606
6	JoyLite™ G7	CSLI30DJ935607
7	JoyLite™ G8	CSLI30DJ935608

DM40 WHEELS

profiling **40**

40 SERIES

*SD = smaller diameter

40mm SD*

Medium size diameter, the external dimensions change according to the profile while smaller diameter remains always the same, SD* 40 mm (radius 20mm)

Features

- 40 mm SD*
- 22 mm bore (20 mm upon request)
- JoyLite 40mm resin diamond polishing wheels with rubber body

METAL BOND

Metal Body Wheels

		STANDARD Parameters			
		TYPE	RPM	FEED	DISTANCE
Step 1		Segmented G1	5200	800 - 1000 mm/min	to profile
Step 2		Continuous G3	5200	1000 - 1200 mm/min	0.30 mm
Step 3		Continuous G4	5200	1000 - 1500 mm/min	0.15 mm
Step 4		Continuous G5	5200	1000 - 1500 mm/min	0.10 mm

* Advisable the use of a cornerbreaker before the profiling set of wheels

AVAILABLE PROFILES



RESIN BOND

Rubber Body Wheels

		JOYLITE Parameters			
		TYPE	RPM	FEED	DISTANCE
Step 5		Resin G6	2700	700 mm/min	0 - 0.05 mm 0 - 0.002"
Step 6		Resin G7	2700	700 mm/min	0 - 0.05 mm 0 - 0.002"
Step 7		Resin G8	2700	700 mm/min	0 - 0.05 mm 0 - 0.002"

1/2 GAS Adapter

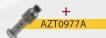
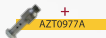


AZT0977A
for 2 and 3 cm

AZT5589A
for 4 cm



A	3 cm R3	3 cm R5	3 cm R10
CR G1F	-	ASFG7013	ASFG0B13
SEG G1	DSSB7665	ASSG7005	ASSG0B05
CR G3	DSGB7663	ASFG7020	ASFG0B20
CR G4	DSGB7664	ASFG7025	ASFG0B25
CR G5	DSGB7665	ASFG7030	ASFG0B30
CR G6F	DSGB7666	ASFG7035	ASFG0B35
JLT G6	CSLA30R3922406	CSLA30R5922406	CSLA30R1022406
JLT G7	CSLA30R3922407	CSLA30R5922407	CSLA30R1022407
JLT G8	CSLA30R3922408	CSLA30R5922408	CSLA30R1022408



DM40 WHEELS



T	2 cm R3 VG	3 cm R3 VG
CR G1F	DSG7063A	ASFA8313T2
SEG G1	DSS7063S	ASSA8305T2
CR G3	DSG70633	ASFA8320T2
CR G4	DSG70634	ASFA8325T2
CR G5	DSG70635	ASFA8330T2
CR G6F	DSG70636	ASFA8335T2
JLT G6	CSLT203T222406	CSLT30R3222406
JLT G7	CSLT203T222407	CSLT30R3222407
JLT G8	CSLT203T222408	CSLT30R3222408
	+	+
	AZT3456A	AZT3456A



Z	3 cm (3.5)	4 cm (4.5)
CR G1F	ASFA4513	ASFA4613
SEG G1	ASSA4505	ASSA4605
CR G3	ASFA4520	ASFA4620
CR G4	ASFA4525	ASFA4625
CR G5	ASFA4530	ASFA4630
CR G6F	ASFA4535	ASFA4635
JLT G6	CSLZ3599922406	CSLZ4599922406
JLT G7	CSLZ3599922407	CSLZ4599922407
JLT G8	CSLZ3599922408	CSLZ4599922408
	+	+
	AZT3456A	AZT5589A



4	2 cm	3 cm	4 cm
CR G1F	ASFA4213	-	-
SEG G1	ASSA4205	-	-
CR G3	ASFA4220	-	-
CR G4	ASFA4225	-	-
CR G5	ASFA4230	-	-
CR G6F	ASFA4235	-	-
JLT G6	CSL42099922406	-	-
JLT G7	CSL42099922407	-	-
JLT G8	CSL42099922408	-	-



minimum radius:
22 mm
(under 1 inch)

custom profiles could be available on request

20 SERIES

20mm SD*

Smaller size diameter Wheel, the external dimensions change according to the profile while smaller diameter remains always the same, SD* 20 mm (radius 10mm)

Features

- 20 mm SD*
- 1/2" GAS male connection
- JoyLite resin diamond polishing Wheel

*SD = smaller diameter

New bond for longer life

All DM20 tools now comes **with measurements & geometry report** to ensure perfect shape of the tool

METAL BOND

Metal Body Wheels

		STANDARD Parameters		
	TYPE	RPM	FEED	DISTANCE
Step 0 (advised)	Electropl. D1*	4800-5500	250-500 mm/min.	To Profile
Step 1	Segmented G1	6000	800-1000 mm/min	To Profile
Step 2	Continuous G3	6000	800-1000 mm/min	0.25 mm
Step 3	Continuous G4	6000	800-1000 mm/min	0.20 mm
Step 4	Continuous G5	6000	800-1000 mm/min	0.10 mm

AVAILABLE PROFILES

- 4
- Tr3
- 7S
- Ar3
- Ar6
- 7



* Advisable the use of AFE80010 Ø16 x 40 ELECTROPLATED FINGERBIT before the profiling set of wheels

RESIN BOND

Rubber Body Wheels

		JOYLITE Parameters		
	TYPE	RPM	FEED	DISTANCE
Step 5	Resin G6	2800	600 mm/min	0.00 - 0.05
Step 6	Resin G7	2800	600 mm/min	0.00 - 0.05
Step 7	Resin G8	2800	600 mm/min	0.00 - 0.05

minimum radius:
12 mm (3/8")

Face DOWN

ZS30 4x4 DOWN 3 cm



TYPE	CODE
G1	DFG42181
G3	DFG42183
G4	DFG42184
G5	DFG42185
JLT G6	CSLZS307T1G206
JLT G7	CSLZS307T1G207
JLT G8	CSLZS307T1G208

Face DOWN

ZS40 4x4 DOWN 4 cm



TYPE	CODE
G1	DFG44081
G3	DFG44083
G4	DFG44084
G5	DFG44085
JLT G6	CSLZS407T1G206
JLT G7	CSLZS407T1G207
JLT G8	CSLZS407T1G208

Face UP

ZS30 4x4 UP 3 cm



TYPE	CODE
G1	DFG41821
G3	DFG41823
G4	DFG41824
G5	DFG41825
JLT G6	CSLZS30071G206
JLT G7	CSLZS30071G207
JLT G8	CSLZS30071G208

Face UP

ZS40 4x4 UP 4 cm



TYPE	CODE
G1	DFG48791
G3	DFG48793
G4	DFG48794
G5	DFG48795
JLT G6	CSLZS407P1G206
JLT G7	CSLZS407P1G207
JLT G8	CSLZS407P1G208

Top selling!

Face DOWN



A30 r3 DOWN 3 cm

TYPE	CODE
G1	DFG3444A
G3	DFG34443
G4	DFG34444
G5	DFG34445
JLT G6	CSLA30ST1G206
JLT G7	CSLA30ST1G207
JLT G8	CSLA30ST1G208

Face DOWN



A40 r3 DOWN 4 cm

TYPE	CODE
G1	DFG45311
G3	DFG45313
G4	DFG45314
G5	DFG45315
JLT G6	CSLA40R3T1G206
JLT G7	CSLA40R3T1G207
JLT G8	CSLA40R3T1G208

Face UP



A30 r3 UP 3 cm

TYPE	CODE
G1	DFG34431
G3	DFG34433
G4	DFG34434
G5	DFG34435
JLT G6	CSLA30R3R1G206
JLT G7	CSLA30R3R1G207
JLT G8	CSLA30R3R1G208

Top selling!

Face DOWN



A30 r6 DOWN 3 cm

TYPE	CODE
G1	DFG38591
G3	DFG38593
G4	DFG38594
G5	DFG38595
JLT G6	CSLA30R6T1G206
JLT G7	CSLA30R6T1G207
JLT G8	CSLA30R6T1G208

Face UP



A30 r6 UP 3 cm

TYPE	CODE
G1	DFG38171
G3	DFG38173
G4	DFG38174
G5	DFG38175
JLT G6	CSLA30R691G206
JLT G7	CSLA30R691G207
JLT G8	CSLA30R691G208

New bond for longer life

NICOLAI DIAMANT

BLADES FOR QUARZITE

Cheetah Series

NNAXQ350 - Ø350mm

NNAXQ400 - Ø400mm

NNAXQ450 - Ø450mm



BLADES FOR GRANITE

Zebra Series

CD535B005 - Ø350mm

CD540A005 - Ø400mm



THIN WALL CORE BITS

1/2 Gas Fitting

APF11035 - Ø35mm



SEG FINGERBITS

for Granite & ES

AFS91070 - Ø23xL40mm - Z6 Yellow Twin

AFS90015 - Ø23xL40mm - Z5 Blue

DFS31115 - Ø18xL40mm - Z4 Yellow

BLADES FOR DEKTON

also for Lapitec, Neolith...

D350S11250830P - Ø350mm

D400S11280832P - Ø400mm

DEKTON SEG FINGERBITS

Dekton, Lapitec, Neolith, Maxfine

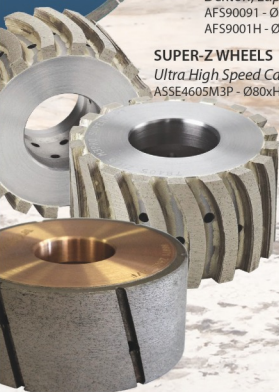
AFS90091 - Ø16xL20mm - Z4

AFS90011H - Ø23xL40mm - Z5

SUPER-Z WHEELS

Ultra High Speed Calibr. Wheels

ASSE4605M3P - Ø80xH45mm



SEAMING TOOLS

High Speed Stalling & Continuous Z Wheels

ASFK4513 G1F - Ø80xH35mm

ASFK4515 G2F - Ø80xH35mm

ASFK4525 G4 - Ø80xH35mm



ISO40 &
HSK80 Cones



TURBO CROWN WHEELS

for Stubbing

AMC00092 - Ø92xH30mm

AMC00054 - Ø50xH20mm



SEGMENTED CROWN WHEELS

for Stubbing

AMS00089 - Ø88xH20mm

AMS00020 - Ø50xH20mm

Distributed & Serviced by

NICOLAI NORTH AMERICA

3480 Broadmoor Ave SE, #102

Grand Rapids, MI 49512 (USA)

T. (+1) 616 855 1550 / F. (+1) 616 222 0919

www.nicolai-na.com

10 SERIES

10mm SD*

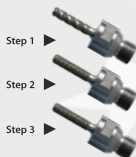
Smaller size diameter Wheel, the external dimensions change according to the profile while smaller diameter remains always the same, SD* 10 mm (radius 5mm)

Features

- 10 mm SD*
- 1/2" GAS male connection (Cylindrical fitting upon request)
- JoyLite resin diamond polishing Wheel

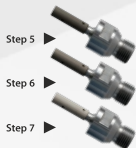
*SD = smaller diameter

Electroplated Metal Body Wheels

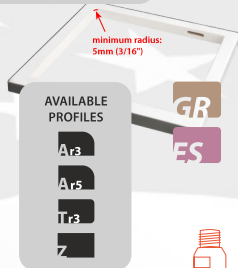


STANDARD Parameters			
TYPE	RPM	FEED	DISTANCE
Electropl. G1	7000	500-700 mm/min	0.30
Electropl. G2	7000	500-700 mm/min	0.15 mm
Electropl. G3	6000	500-700 mm/min	0.10 mm

RESIN BOND Rubber Body Wheels



JOYLITE Parameters			
TYPE	RPM	FEED	DISTANCE
Resin G6	4000	400-600 mm/min	0.00 - 0.05
Resin G7	4000	400-600 mm/min	0.00 - 0.05
Resin G8	4000	400-600 mm/min	0.00 - 0.05



AVAILABLE PROFILES

Ar3
Ar5
Tr3
Z



A r3

A r3 3 cm

ELE G1	TC14A01
ELE G2	TC14A02
ELE G3	TC14A03
JLT G6	TC14A04
JLT G7	TC14A05
JLT G8	TC14A06

A r5

A r5 3 cm

ELE G1	TC14B01
ELE G2	TC14B02
ELE G3	TC14B03
JLT G6	TC14B04
JLT G7	TC14B05
JLT G8	TC14B06



Tr3

Tr3 3 cm

ELE G1	DFE6587C
ELE G2	DFE6587B
ELE G3	DFE6587A
JLT G6	TC14C04
JLT G7	TC14C05
JLT G8	TC14C06



Z

Z 3 cm

ELE G1	DFE6672C
ELE G2	DFE6672B
ELE G3	DFE6672A
JLT G6	CSLZ359991G106
JLT G7	CSLZ359991G107
JLT G8	CSLZ359991G108



NOTE: Item Codes beginning with "TC" are temporary codes

TOOLS FOR PORCELAINS



BLADES
Ø350 & Ø400 blades

CODE	Ø mm	Z	CORE	BORE*	BOND	RPM	FEED
D300Si1210830P	Ø300	21	SIL	B60	DEK67 G	1700-1800	25-50
D350Si1250830P	Ø350	25	SIL	B90+2	DEK67 G	1700-1800	25-50
D400SHY281032P	Ø400	28	SIL	B50 / B60	DEK67	1700-1800	25-50
D400Si1280832G	Ø400	28	SIL	B90+2	DEK67 G	1700-1800	25-50
D350Si1250830P ☺	Ø350	25	SIL	B50 / B60	DEK67 G	1700-1800	25-50
D400Si1280832P ☺	Ø400	28	SIL	B50 / B60	DEK67 G	1700-1800	25-50
D450Si1320834G	Ø450	32	SIL	B90+2	DEK67 G	1700-1800	25-50

* other bore measures upon request



CORE BITS
Continuous rim
1/2 GAS Fitting

CODE	Ø mm	Ø *	L / Lu	RPM	FEED
APF11020	Ø20	Ø3/4"	90/50	2500	50-100
APF11025	Ø25	Ø1"	90/50	2600	50-100
APF11032	Ø32	Ø1-1/4"	90/50	2400	40-50
APF11035	Ø35	Ø1-3/8"	90/50	2200	40-50
APF11038	Ø38	Ø1-1/2"	90/50	2200	40-50
APF11045	Ø45	Ø1-3/4"	90/50	2200	40-50
APF11050	Ø50	Ø2"	90/50	2000	40-50



FINGER BITS
1/2 GAS Fitting

CODE	Ø mm	L mm	Z	TWIN	RPM	FEED
AFS90128	Ø20	25	5	N	4500-5500	300-500
AFS90126	Ø20	40	5	N		
AFS90279	Ø23	25	5	Y		
AFS9001H	Ø23	40	5	N	4500-5200	250-500
AFS90272	Ø23	40	6	Y	4500-5200	250-500

Dekton, Lapitec, Neolith and Laminam trademarks are the property of their respective owners

for BRETON

edge working tools

breton



Turbo
Pre-Cutting Wheel



Generating
Conic Frontal Wheel



Calibrating Wheel



Diamond blade

	DESCRIPTION	CODE	SIZE	FITTING	MODEL
1	TURBO PRE-CUTTING WHEEL	ACSZ1604	Ø130x18 60°	B120	CTB PLATINUM
	SEG PRE-CUTTING WHEEL	DSS4217S	Ø170x18 60°	B50+4HØ8/120	CTB PLATINUM
2	GENERATING CONIC FRONTAL WHEELS	ACF3BR4S	Ø130x47,5	M30 x1,5	CTB PLATINUM
		DSS3759S	Ø170x35	B50+4HØ8/120	EASY EDGE
	KERFING WHEELS	D250NEY171026F	Ø250x2,6	B30	CTB PLATINUM
		on request	Ø250x4,4	B30	CTB PLATINUM
		on request	Ø250x6	B30	CTB PLATINUM
3	CALIBRATING WHEELS	DSS4605S	Ø250 Z20 20x10x7	B50+4HØ9/85	CTB PLATINUM
		DSS3854S	Ø170	B50+4HØ8/120	EASY EDGE
4	DIAMOND BLADES	D250SEY171032S	Ø250x3,2	B50+4HØ9/85	CTB PLATINUM
		D250LMV301044A	Ø250x4,4	B50+4HØ9/120	EASY EDGE
	PROFILING WHEEL	AMS14016	Ø250X10	B50+4HØ9/120	EASY EDGE

for COMANDULLI

edge working tools



Turbo Pre-cutting Wheel
G1-G2



Segmented
Pre-Cutting Wheel
G1-G2



Generating
Frontal Wheel



Generating
Conic Frontal Wheel
G3



Segmented
Diamond Wheel



KERFING Wheel



Calibrating Wheel



Diamond Blade

	DESCRIPTION	CODE	SIZE	FITTING	MODEL
1	TURBO PRE-CUTTING WHEEL	ACSZ1550	Ø155x25 60°	B50+4HØ12,5/85	PNC / SYNTHESIS / OMEGA
2	SEGMENTED PRE-CUTTING WHEEL	ACSY1602	Ø155x20 60°	B50+4HØ12,5/85	PNC / SYNTHESIS / OMEGA
3	GENERATING FRONTAL WHEELS	ACF2004S	Ø120x27,5+10	M24	NEW SYSTEM
		ACFF14S	Ø120x27,5+5	B40+4HØ7/50	NEW SYSTEM / ATHENA
		ACF6F14S	Ø120x27,5+10 T21	B40+4HØ7/50	NEW SYSTEM / ATHENA
		ACF6F14U	Ø120x27,5+10 T22	B40+4HØ7/50	NEW SYSTEM / ATHENA
		ACF1184S	Ø120x35	M18	SYSTEM
4	GENERATING CONIC FRONTAL	ACF3304S	Ø130x47,5	M30	PNC / OMEGA
5	SEGMENTED DIAMOND WHEEL	DSS2970S	Ø150x20 R10	B40+4HØ7/50	NEW SYSTEM
6	KERFING WHEELS	EMS00066	Ø260x8	B50+4HØ12,5/95	EDILUX / PNC
		EMS00116	Ø260x10	B50+4HØ12,5/95+4HØ9/135	
		EMS00067	Ø300x8	B50+4HØ9/135	EDILUX / PNC
7	CALIBRATING WHEELS	DSS3772S	Ø190	B50+4HØ12,5/95	MUSA / ALMA / PENTA
		DSS1654S	Ø260	B50+4HØ12,5/95	EDILUX / PNC / OMEGA
8	DIAMOND BLADES	ADS01002	Ø150x3,6	B30+4HØ9/45	SYSTEM PLUS
			Ø200x3,6	B50+4HØ9/135	EDILUX / PNC / OMEGA / SY.
		D250SEY171032C	Ø250x3,2	B50+4HØ12,5/95+4HØ9/135	EDILUX / PNC / OMEGA / ALMA

for MARMOMECCANICA

edge working tools



Turbo Pre-cutting Wheel



Double Side Segmented Pre-Cutting Wheel



Generating Conic Frontal Wheel



Tiger Conic Frontal Wheel



KERFING Wheel



Calibrating Wheel

DESCRIPTION	CODE	SIZE	FITTING	MODEL
1 TURBO PRE-CUTTING WHEEL	ACSZ1603	Ø130x18 60°	M24	LCT - LTH
2 DOUBLE SIDE SEGMENTED PRE-CUTTING WHEEL	ACSZ1803	Ø130x34 60°x2	M24	LCT - LTH
3 CONIC FRONTAL WHEELS BULLNOSE SHAPING	ACF4244S	Ø155x60 60°	M24	
	ACF3244S	Ø130x47 60°	M24	
4 TIGER CONIC FRONTAL WHEEL	ACFZ4242	Ø155x60 60°	M24	
5 GROOVING WHEELS	AMS10220	Ø250x8	B50	LCT / LCH - LTH
	AMS10230	Ø250x10	B50	LCT / LCH - LTH
6 CALIBRATING WHEEL	DSS3384S	Ø250	B50	LCT - LTH

for SASSOMECCANICA

edge working tools



Turbo Pre-cutting Wheel



Segmented Pre-Cutting Wheel



Generating Conic Frontal Wheel



Chamfering Wheel



KERFING-Calibrating Wheel



KERFING Wheel



Calibrating Wheel



Diamond Blade

DESCRIPTION	CODE	SIZE	FITTING	MODEL
1 TURBO PRE-CUTTING WHEELS	ACS21600	Ø130x18 60°	B95+6M6/115	TE / TE Experience / FULL / RCM
	ACS21601	Ø130x18 60°	SNAIL	TE / RCM
2 SEGMENTED PRE-CUTTING WH.	DSS3362S	Ø106x20 70°	B65+6M6/80	TE / RCM
3 GENERATING CONIC FRONTAL WHEELS	ACF3004S	Ø130x47	B95+6M6/115	TE / TE Experience / FULL / RCM
	ACF35M4S	Ø130x47	SNAIL	TE / TE Experience / FULL / RCM
4 KERFING-CALIBRATING WHEELS	DSS2593S	Ø160x6+Ø130x10	B50+6HØ9/80	TE / TE Experience / FULL / RCM
	DSS1189S	Ø160x8+Ø130x10	B50+6HØ9/80	TE / TE Experience / FULL / RCM
5 CHAMFERING WHEEL	DSG32653	Ø125x25	B95+6M6/115	TE / TE Experience / FULL
6 KERFING WHEELS	DSS3389S	Ø160x5	B50+6HØ9/80	TE / TE Experience / FULL
	EMS00057	Ø160x8	B50+6HØ9/80	TE / TE Experience / FULL
	DSS1188S	Ø200x8	B30	TE
7 CALIBRATING WHEELS	DSS0294S	Ø130	B95+6M6/115	TE / TE Experience / FULL
	DSS4143S	Ø130	B50+6HØ9/80	TE / TE Experience / FULL
	DSS3183S	Ø180	B58+6HØ9/72	CDF
8 DIAMOND BLADES	D200NG6130640M	Ø200x4	B40	CDF / FULL
	D230NEY151030M	Ø230x3	B40	CDF / FULL
ELECTROPLATED DIAMOND BL.	EDE00016	Ø160x7	B58+6HØ9/72	CDF
SNAIL LOCK FITTING	AZT1196A	Ø100	SNAIL > Ø95+6HØ7/115	

for MONTRESOR

edge working tools



DESCRIPTION	CODE	SIZE	FITTING	MODEL	PRICE
1 TURBO PRE-CUTTING WHEELS	ACSZ1551	Ø155x25 60°	M30	LARA 40s / LARA 60s / LARA 80s / LUNA	
	ACSZ1602	Ø130x18 60°	M30	LARA 40s / LARA 60s	
2 DOUBLE SIDE TURBO PRE-CUTTING WHEELS	ACSZ1802	Ø130x34 60°x2	M30	LARA 80 / LARA 60 / LUNA 740	
3 SEGMENTED PRE-CUTTING WHEELS	ACSY1606	Ø150x20 60°	M30	LARA 40s / LARA 60s / LARA 80s / LUNA	
	ACSY1603	Ø130x18 60°	M30	LARA 40s / LARA 60s	
4 DOUBLE SIDE SEG PRE-CUTTING WHEELS	ACSY1605	Ø150x20+15 60°	M30	LARA 40s / LARA 60s / LARA 80s / LUNA	
5 GENERATING CONIC FRONTAL WHEELS	ACF3304S	Ø130x47,5 60°	M30	LARA 40s / LARA 60s	
	ACF4304S	Ø155x60 60°	M30	LUNA 740	
	ACFH304S	Ø155x60x5	M30	All machines new machine	
	ACFH305U	Ø155x60 DoubleGrit	M30	All machines new machine	
6 DRIPPING WHEELS	EMS00094	Ø250x6	B50+4HØ9/90	All machines	
	EMS00089	Ø250x8	B50+4HØ9/90	All machines	
	EMS00091	Ø250x10	B50+4HØ9/90	All machines	
7 CALIBRATING WHEELS	DSS3830S	Ø200	B50+4HØ9/90+4HØ9/125	Optional for all machines	
	EC500002	Ø200	B50+4HØ9/90	All machines	
	DSS3384S	Ø250	B50+4HØ9/90	Optional for LARA / LUNA 740	
8 DIAMOND BLADES	D250NEY151044M	Ø250x4,4	B50+4HØ9/125	LARA 80 / LARA 80s / UNICA 810-4a	
	D300LMV181044M	Ø300x4,4	B50+4HØ9/125	LARA 80 / LARA 80s / UNICA 810-4a	
	D250SG6301026M	Ø250x2,6	B50+4HØ9/125	VIVA 220 V-Groove	
	D260SG6301026M	Ø260x2,6	B50+4HØ9/125	VIVA 220 V-Groove	

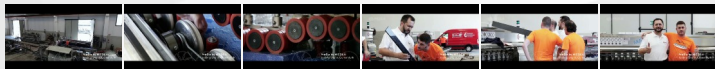
All original manufacturer names and brands are used for identification purposes only.

* trademark property of MONTRESOR s.r.l.

Nicolai Diamant s.r.l. is not affiliated with MONTRESOR s.r.l.

Advised ProGlo Wheels

edge working tools



Watch the Video
ProGlo @ Comandulli
Nicolai ProGlo.com

BRETON - PLATINUM EDGE V 7S

BULLNOSE AND STRAIGHT EDGE



GRITS: 60, 120, 220, 400, 800, 1800, 3500

BRETON - EASYEDGE V 7S

STRAIGHT EDGE



GRITS: 60, 120, 220, 400, 800, 1800, 3500

COMANDULLI - OMEGA 60

BULLNOSE AND STRAIGHT EDGE



GRITS: 120, 220, 400, 800, 1800, 3500

COMANDULLI - OMEGA 100

BULLNOSE AND STRAIGHT EDGE



GRITS: 60, 120, 220, 400, 800, 1800, 3500

COMANDULLI - PENTA

STRAIGHT EDGE



GRITS: 220, 400, 800, 1800, 3500

COMANDULLI - SYNTHESIS

BULLNOSE AND STRAIGHT EDGE



GRITS: 60, 120, 220, 400, 800, 1800, 3500

MARMO MECCANICA - LCT521

BULLNOSE AND STRAIGHT EDGE



GRITS: 120, 220, 400, 800, 1800

MARMO MECCANICA - LCT522

BULLNOSE AND STRAIGHT EDGE



GRITS: 120, 220, 400, 800, 1800, 3500

MARMO MECCANICA - LCTV711

STRAIGHT EDGE



GRITS: 120, 220, 400, 800, 1800, 3500

MARMO MECCANICA - LTV

BULLNOSE AND STRAIGHT EDGE



GRITS: 120, 220, 400, 800, 1800, 3500

MONTRESOR - LARA 60

BULLNOSE AND STRAIGHT EDGE



GRITS: 120, 220, 400, 800, 1800, 3500

MONTRESOR - LARA 80

BULLNOSE AND STRAIGHT EDGE



GRITS: 60, 120, 220, 400, 800, 1800, 3500

MONTRESOR - LUNA 740

BULLNOSE AND STRAIGHT EDGE



GRITS: 120, 220, 400, 800, 1800, 3500

SASSO - FLYING BULL

BULLNOSE AND STRAIGHT EDGE



GRITS: 120, 220, 400, 800, 1800, 3500

SASSO - LYING FLAT

STRAIGHT EDGE



GRITS: 60, 120, 220, 400, 800, 1800, 3500

SASSO - TE EXPERIENCE

BULLNOSE AND STRAIGHT EDGE



GRITS: 60, 120, 220, 400, 800, 1800, 3500

PARK INDUSTRIES - FASTBACK

STRAIGHT EDGE



GRITS: 60, 120, 220, 400, 800, 1800, 3500

PARK INDUSTRIES - VELOCITY

BULLNOSE AND STRAIGHT EDGE



GRITS: 120, 220, 400, 800, 1800, 3500



ProGlo

by NICOLAI
DIAMANT

Resin Polishing Wheels for GRANITE & ENGINEERED STONE

ProGlo is a new resin bonded line of wheels that compromise quality and price. Easy to set up, it works with almost any parameter on a wide variety of material. It has reasonable life and a convenient price. This is our entry level product line for granite and engineered stone edge polishing.



Watch the video @ [nicolaiproglo.com](https://www.nicolaiproglo.com)

ProGlo CAYMAN



FLAT

GRIT	CODE Ø130 / Ø5"	CODE Ø150 / Ø6"
60	ALRPC3GE0060	ALRPC5GE0060
120	ALRPC3GE0120	ALRPC5GE0120
220	ALRPC3GE0220	ALRPC5GE0220
300	ALRPC3GE0300	ALRPC5GE0300
400	ALRPC3GN0400	ALRPC5GN0400
600	ALRPC3GN0600	ALRPC5GN0600
800	ALRPC3GN0800	ALRPC5GN0800
1200	ALRPC3GN1200	ALRPC5GN1200
1800	ALRPC3GN1800	ALRPC5GN1800
2500	ALRPC3GN2500	ALRPC5GN2500
3500	ALRPC3GN3500	ALRPC5GN3500

ProGlo EAGLE



FLAT

ROUND

BULLNOSE

GRIT	CODE Ø130 / Ø5"	CODE Ø150 / Ø6"
60	ALRPE3GE0060	ALRPE5GE0060
120	ALRPE3GE0120	ALRPE5GE0120
220	ALRPE3GE0220	ALRPE5GE0220
300	ALRPE3GE0300	ALRPE5GE0300
400	ALRPE3GE0400	ALRPE5GE0400
600	ALRPE3GE0600	ALRPE5GE0600
800	ALRPE3GE0800	ALRPE5GE0800
1200	ALRPE3GE1200	ALRPE5GE1200
1800	ALRPE3GE1800	ALRPE5GE1800
2500	ALRPE3GE2500	ALRPE5GE2500
3500	ALRPE3GE3500	ALRPE5GE3500

ProGlo BULL



BULLNOSE

GRIT	CODE Ø130 / Ø5"	CODE Ø150 / Ø6"
60	ALRPB3GE0060	ALRPB5GE0060
120	ALRPB3GE0120	ALRPB5GE0120
220	ALRPB3GE0220	ALRPB5GE0220
300	ALRPB3GE0300	ALRPB5GE0300
400	ALRPB3GE0400	ALRPB5GE0400
600	ALRPB3GE0600	ALRPB5GE0600
800	ALRPB3GE0800	ALRPB5GE0800
1200	ALRPB3GE1200	ALRPB5GE1200
1800	ALRPB3GE1800	ALRPB5GE1800
2500	ALRPB3GE2500	ALRPB5GE2500
3500	ALRPB3GE3500	ALRPB5GE3500

ProGlo WAFFLE



FLAT

GRIT	CODE Ø130 / Ø5"	CODE Ø150 / Ø6"
60	ALRPW3GE0060	ALRPW5GE0060
120	ALRPW3GE0120	ALRPW5GE0120
220	ALRPW3GE0220	ALRPW5GE0220
300	ALRPW3GE0300	ALRPW5GE0300
400	ALRPW3GE0400	ALRPW5GE0400
600	ALRPW3GE0600	ALRPW5GE0600
800	ALRPW3GE0800	ALRPW5GE0800
1200	ALRPW3GE1200	ALRPW5GE1200
1800	ALRPW3GE1800	ALRPW5GE1800
2500	ALRPW3GE2500	ALRPW5GE2500
3500	ALRPW3GE3500	ALRPW5GE3500

ProGlo HAWK



FLAT

ROUND

BULLNOSE

GRIT	CODE Ø130 / Ø5"	CODE Ø150 / Ø6"
60	ALRPH3GE0060	ALRPH5GE0060
120	ALRPH3GE0120	ALRPH5GE0120
220	ALRPH3GE0220	ALRPH5GE0220
300	ALRPH3GE0300	ALRPH5GE0300
400	ALRPH3GE0400	ALRPH5GE0400
600	ALRPH3GE0600	ALRPH5GE0600
800	ALRPH3GE0800	ALRPH5GE0800
1200	ALRPH3GE1200	ALRPH5GE1200
1800	ALRPH3GE1800	ALRPH5GE1800
2500	ALRPH3GE2500	ALRPH5GE2500
3500	ALRPH3GE3500	ALRPH5GE3500

DIAMOND BLADES

Cutting Tools



Orange CHEETAH for GRANITE

CODE	Ø	H (mm)	W (mm)	Z	BORE	RPM (30-35m/s)	Feed (mm/min)
NNAXG350	350 - 14"	25			50/60	2200	2000-3000 mm
NNAXG400	400 - 16"	25			50/60	2000	
NNAXG450	450 - 18"	25			50/60	1700	

Yellow CHEETAH for QUARZITE & GRANITE

CODE	Ø	H (mm)	W (mm)	Z	BORE	RPM (30-35m/s)	Feed (mm/min)
NNAXQ350	350 - 14"	25			50/60	2200	2000-3000 mm
NNAXQ400	400 - 16"	25			50/60	2000	
NNAXQ450	450 - 18"	25			50/60	1700	

Lilac CHEETAH for DEKTON & CERAMICS

CODE	Ø	H (mm)	W (mm)	Z	BORE	RPM (30-35m/s)	Feed (mm/min)
NNXD350	350 - 14"	25			50/60	2200	2000-3000 mm
NNXD400	400 - 16"	25			50/60	2000	
NNXD450	450 - 18"	25			50/60	1700	

GREEN ZEBRA

for GRANITE & ENGINEERED STONE

Silent core



CODE SILENT	Ø	H	Z	CORE	BORE	RPM (30-35m/s)	Feed (mm/min)
CDS35B005	350 - 14"	15	25	SDW	50/60	1900-2200	1500-5000mm
CDS40A005	400 - 16"	15	28	SDW	50/60	1400-1600	
CDS40A035	400 - 16"	15	28	SDW	90+28		
CDS45B005	450 - 18"	15	32	SDW	50/60	1270-1450	
CDS50B005	500 - 20"	15	34	SDW	50/60	1100-1350	



MR70 BLADES

for MARBLE - Silent & Normal core



CODE	Ø	H	W	Z	CORE	BORE	RPM (40-45m/s)	Feed (mm/min)
D300SF02107300	300 - 12"	7	3	21	SDW	50	2550-3000	
D300N2P2507300	300 - 12"	7	3	25	NOR	50		
D350SF02507300	350 - 14"	7	3	25	SDW	50	2200-2600	
D350NF02507300	350 - 14"	7	3	25	NOR	50		
D350SF0250730P	350 - 14"	7	3	25	SDW	60		
D350NF0250730P	350 - 14"	7	3	25	NOR	60		
D400NF0280734P	400 - 16"	7	3,4	28	NOR	60	1700-2100	
D400SF0280734P	400 - 16"	7	3,4	28	SDW	60		
D450NF1320740P	450 - 18"	7	4	32	NOR	60	1600-2000	
D450SF1320740P	450 - 18"	7	4	32	SDW	60		
D500NF1360740P	500 - 20"	7	4	36	NOR	60	1500-1900	
D500SF1360740P	500 - 20"	7	4	36	SDW	60		
D550NF2400750P	550 - 22"	7	5	40	NOR	60	1450-1800	
D550SF2400750P	550 - 22"	7	5	40	SDW	60		
D625NF2420750P	625 - 25"	7	5	42	NOR	60	1300-1600	
D625SF2420750P	625 - 25"	7	5	42	SDW	60		



MR70: soft bond (harder bonds available upon request)

STUBBING WHEELS

Segmented & Electroplated

CODE	TYPE	SIZE mm	FIT.	RPM	FEED	MAT.
AMC00054	FCC	Ø50x20	B14 - 3+3	4500	250-500	GR/ES
AMC00055	FCC	Ø50x20	B10 - 2+2	4500	250-500	GR/ES
AMC00056	FCC	Ø50x20	B14 - 3+3	4500	250-500	MR
AMC00057	FCC	Ø50x20	B10 - 2+2	4500	250-500	MR
EMS00011	SEG	Ø46x20	B14 - 3+3	4500	250-500	GR/ES
AMS00020	SEG	Ø50x20	B10 - 2+2	4500	250-500	GR/ES
EMS00095	SEG	Ø50x20	B14 - 3+3	4500	250-500	GR/ES
AMS00021	SEG	Ø53x20	B10 - 2+2	4500	250-500	GR/ES
EMS00134	SEG	Ø53x20	B14 - 3+3	4500	250-500	GR/ES
AME00020	ELE	Ø50x20	B10 - 2+2	4500	250-500	MR
AME00028	ELE	Ø50x20	B14 - 3+3	4500	250-500	MR
AMS00089	SEG	Ø88x20		4300	300-600	GR/ES
AME00030	ELE	Ø85x20		5000	500-600	MR



STUBBING WHEELS

Segmented & Electroplated

with 1/2 GAS Fitting

CODE	TYPE	SIZE mm	FIT.	RPM	FEED	MAT.
DFS4628S	SEG	Ø30x20	1/2 GAS	6000	400-500	GR/ES
DFA4831E	ELE	Ø40x25	1/2 GAS	6000	400-500	MR
DFA4628E	ELE	Ø30x20	1/2 GAS	6000	400-500	MR



CONCAVE STUBBING WHEELS

Segmented & Electroplated

CODE	TYPE	SIZE mm	FIT.	RPM	FEED	MAT.
DSS5348S	SEG	Ø50x23	Ø10+2H	6000	400-500	GR/ES
DSS5455S	SEG	Ø85x23	Ø50+3H	6000	400-500	GR/ES
DSS5445S	SEG	Ø88x24	Ø50+3H	6000	400-500	GR/ES
DSE1612E	ELE	Ø50x20	Ø10+2H	6000	400-500	MR
DSE4343D	ELE	Ø85x20	Ø50+6H	6000	400-500	MR
DSE3649D	ELE	Ø100x20	Ø50+6H	6000	400-500	MR
DSE455D	ELE	Ø85x23	Ø50+3H	6000	400-500	MR



TOOLS FOR 5 AXIS & ROBOTS

5X

EXTENSION FOR SMALL STUBBING WHEEL

Flange > M8+2T

CODE	SIZE mm	FITTING	FITTING
AZT5071A	Ø30x150mm	B50+6H Ø6.5/63	M8+2T



EXTENSION FOR SMALL STUBBING WHEEL

M36 > M8+2T

CODE	SIZE mm		FITTING	FITTING
AZT5401A	Ø30 x 100 mm	LEFT Tread	M36 x2	M8+2T
AZT5402A	Ø30 x 250 mm	LEFT Tread	M36 x2	M8+2T
AZT5401B	Ø30 x 100 mm	RIGHT Tread	M36 x2	M8+2T
AZT5402B	Ø30 x 250 mm	RIGHT Tread	M36 x2	M8+2T



EXTENSION FOR SMALL STUBBING WHEEL

*Flange > Small Flange 1-2**

CODE	SIZE mm	FITTING	FITTING
AZT2354A	Ø38 L133 mm	B50+6HØ6.5/63	Ø10 + 2 M6/25
AZT2353A	Ø38 L185 mm	B50+6HØ6.5/63	Ø10 + 2 M6/25
AZT1381A	Ø38 L224 mm	B50+6HØ6.5/63	Ø10 + 2 M6/25
AZT5119A*	Ø38 L175 mm	B50+6HØ6.5/63	Ø14 + 3 M6/25
AZT4661A*	Ø38 L210 mm	B50+6HØ6.5/63	Ø14 + 3 M6/25



EXTENSION FOR SMALL STUBBING WHEEL

*1/2 GAS > Small Flange 1-2**

CODE	SIZE mm	FITTING	FITTING
AZT0765A	Ø30 L30 mm	1/2 Gas	Ø10 + 2 M6/25
AZT0573A	Ø30 L80 mm	1/2 Gas	Ø10 + 2 M6/25
AZT2513A	Ø30 L100 mm	1/2 Gas	Ø10 + 2 M6/25
AZT4383A *	Ø30 L30 mm	1/2 Gas	Ø14 + 3 M6/25
AZT4383D *	Ø30 L60 mm	1/2 Gas	Ø14 + 3 M6/25



TOOLS FOR 5 AXIS & ROBOTS

5X

ELECTROPLATED FINGERBITS

With 1/2 GAS fitting

CODE	SIZE mm	RPM	FEED	MAT.
AFE80005	Ø16x30	4800-5500	250-500	MR
AFE80010	Ø16x40	4800-5500	250-500	MR
AFE80015	Ø16x50	4800-5500	250-500	MR
AFE80027	Ø20x60	4800-5500	250-500	MR
AFE80030	Ø20x70	4800-5500	250-500	MR
AFE80034	Ø20x80	4800-5500	250-500	MR
AFE80037	Ø20x100	4800-5500	250-500	MR
AFE80055	Ø23x105	4800-5500	250-500	MR



REPLACEABLE

ELE FINGERBITS

With 1/2 GAS fitting

CODE	SIZE mm	RPM	FEED	MAT.
EFE00176	Ø20x40 M12	4500-5200	250-500	MR
EFE00183	Ø20x50 M12	4500-5200	250-500	MR
EFE00164	Ø20x60 M12	4500-5200	250-500	MR
DFE35850	Ø20x80 M12	4500-5200	250-500	MR
DFE45861	Ø20x130 M12	4500-5200	250-500	MR



REPLACEABLE

ELE STEP CUT. FINGERBIT

With 1/2 GAS fitting

CODE	SIZE mm	RPM	FEED	MAT.
EFE00200	Ø25xL40xLu130	4500-5200	250-500	MR
EFE00201	Ø30xL40xLu150	4500-5200	250-500	MR



ELECTROPLATED

REPLACEABLE TIPS

CODE	SIZE mm	RPM	FEED	MAT.
EFE00165**	Ø20x22 M12	4500-5200	250-500	MR
EFE00199**	Ø30x30 M14	4500-5200	250-500	MR
EFE00184*	Ø20x20 M12	4500-5200	250-500	MR
DFE36552*	Ø25x25 M12	4500-5200	250-500	MR



D30 CROWN MILL

for Incremental Cutting

CODE	Ø mm	H mm	FIT.	RPM	FEED	MAT
DFS3705S	Ø30	15	1/2 G	4200-4800	800-2000	GR/ES
DFE4628E	Ø30	20	1/2 G	4200-4800	800-2000	MR



TOOLS FOR 5 AXIS & ROBOTS

5X

**EXTENSION flanged
STUBBING WHEEL**
Flange > 1/2 GAS (female)

CODE	SIZE mm	FITTING	FITTING
AZT0587A	Ø28 x 100 mm	B50+6H	1/2 GAS fem.
AZT0588A	Ø28 x 50 mm	B50+6H	1/2 GAS fem.
AZT0589A	Ø28 x 200 mm	B50+6H	1/2 GAS fem.


**EXTENSION flanged
STUBBING WHEEL**
Flange > Flange

CODE	SIZE mm	FITTING	FITTING
AZT0583A	Ø45 x 100 mm	B50+6H	Ø50+6M6/63
AZT0584A	Ø45 x 133 mm	B50+6H	Ø50+6M6/63
AZT0734A	Ø45 x 207 mm	B50+6H	Ø50+6M6/63
AZT2501A	Ø45 x 300 mm	B50+6H	Ø50+6M6/63


ADAPTER
1/2 GAS > Flange

CODE	SIZE mm	FITTING	FITTING
AZT0566A	Ø72 mm	1/2 GAS	Ø50+6M6/63
AZT5122A	Ø72 mm	1/2 GAS	Ø50+4M6/63


Ø20 CROWN MILL
for Incremental Cutting

CODE	Ø mm	H mm	FIT.	RPM	FEED	MAT
CFS4C077	Ø20	20	M12	4800-5500	400-1000	GR/ES
CFS4C067	Ø20	20	M12 L	4800-5500	400-1000	GR/ES


ELE CROWN MILL
for Incremental Cutting

CODE	Ø mm	H mm	FIT.	RPM	FEED	MAT
AFE41010	Ø20	10	M10	4200-4800	800-2000	MR
AFE41020	Ø20	10	M12	4200-4800	800-2000	MR

TOOLS FOR 5 AXIS & ROBOTS



TOOL HOLDER FOR

D20 CROWN MILL

1/2 GAS > M10 / M12

CODE	SIZE mm	FITTING	FITTING
AZT1518G	Ø17 x 30 mm	1/2 GAS	M10
AZT1518E	Ø17 x 30 mm	1/2 GAS	M12
AZT1518B	Ø17 x 60mm	1/2 GAS	M10
AZT1518A	Ø17 x 60mm	1/2 GAS	M12
AZT1518F	Ø18 x 100mm	1/2 GAS	M12
AZT1518T	Ø18 x 120mm	1/2 GAS	M12



ELECTROPLATED FINGERBITS

With flange fitting

CODE	SIZE mm	RPM	FEED	MAT.
EFE00085	Ø20x210	4500-5200	250-500	MR
EFE00034	Ø30x115	4500-5200	250-500	MR
EFE00144	Ø30x215	4500-5200	250-500	MR
DFE3185E	Ø20x50 Lu185	4500-5200	250-500	MR
DFE1642A	Ø30x30 Lu280	4500-5200	250-500	MR
EFE00023	Ø30x50 Lu200	4500-5200	250-500	MR



STPCUTTER ELE FINGERBITS

With 1/2 GAS fitting

CODE	SIZE mm	RPM	FEED	MAT.
AFE81005	Ø23 x 40 Lu85 mm	4500	250-500	MR
AFE81010	Ø23 x 40 Lu105 mm	4500	250-500	MR
AFE81015	Ø23 x 40 Lu125 mm	4500	250-500	MR
AFE81020	Ø23 x 40 Lu155 mm	4500	250-500	MR
AFE81030	Ø23 x 40 Lu205 mm	4500	250-500	MR



*Ask for
our complete
"5 axis" catalog !*

*Ask for
our complete
"5 axis" catalog !*



Full range of widia, pcd,
electroplated and synthered
mills for roughing, sculpting, finishing...

Adapters
Extensions
Cones



Full range of
stubbing wheels and profiling wheels



TOOLING RANGE FOR GRANITE AND ENGINEERED STONE



UPGRADED PERFECTION

Thanks to the constant research in new technologies Nicolai Diamant today offers a wide range of tools and is able to guarantee constant measures of shape. Each wheel is measured with Zares system.

NICOLAI DIAMANT'S TECHNOLOGY

Nicolai Diamant offers:

- Four sizes of wheels (L, M, S, XS);
- standard set of tools configured with seven steps (also available with 5 or 6 steps)
- EVO™ new bond for high speed & longer life
- JoyLite™ Polishing technology



EVO™ Evolutionary bond for high speed & longer life

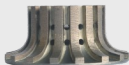
Nicolai High Speed Bond for higher feed rate, 3 - 4 times faster than standard metal wheels

Nicolai tools generate lower decibels than other high speed tools.

Redressing Service

All metal wheels are made with 4,5mm thick of bond and are suitable to be redressed 2 or 3 times for extended life.

extended life!



NICOLAI DIAMANT'S WHEELS



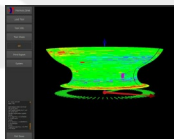
Nicolai Diamant offers four sizes of wheels:

SERIES	DIMENSIONS	RADIUS	STANDARD FITTING
60 SERIES	60 mm SD (small diameter)	30 mm	35 mm
40 SERIES	40 mm SD (small diameter)	20 mm	20 mm *
20 SERIES	20 mm SD (small diameter)	10 mm	1/2 gas male
10 SERIES	10 mm SD (small diameter)	5 mm	1/2 gas male

(* 22 mm upon request)

Features

- Consistent, accurate profiles
- Low noise
- Perfect balancing
- Clear labeling
- Measures included
- Professional packaging
- Fast delivery



WHEEL'S MEASURES

EASY SET-UP

Nicolai Diamant wheels are measured carefully with Zares System. Measures are provided on the external label. A complete Zares report is also included inside the box of every new wheel.

Just add the height of the wheel to your cone length and you are ready to go!

** Please call 616 855 1550 or contact your dealer for further information on our EDM process.**

In House redressing service available! Ask for it!



Open profiles

Closed profiles

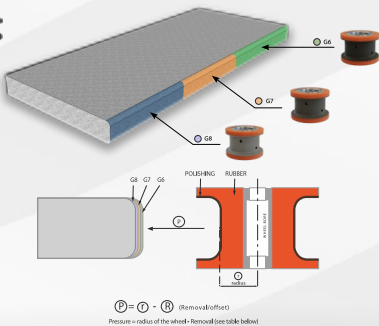
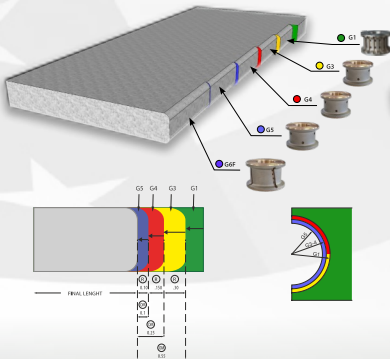




RECOMMENDED USE OF WHEELS

Material REMOVAL RATES OF #G1, #G3, #G4, #G5

Offsets & Pressures of #G6, #G7, #G8



$$P = r - R \quad (R = \text{Removal} / \text{Offset})$$

Pressure = radius of the wheel - Removal (see table below)

PARAMETERS TABLE
for 4 metal + 3 rubber wheels











STEP	TYPE	GRIT	OS Offset		OM Over Material		rpm	feed
			mm	inches	mm	inches		
Step 1	SEG	G1	-	-	0.55	0.022	5000	2500
Step 2	CONT.	G3	0.30	0.012	0.25	0.010	5000	3000
Step 3	CONT.	G4	0.15	0.006	0.10	0.004	4500	3000
Step 4	CONT.	G5	0.10	0.004	0.00	0.000	4500	2500
Step 5	JoyLite	G6	0.00 - 0.05	0.00 - 0.002	0.000	0.000	2500	1000
Step 6	JoyLite	G7	0.00 - 0.05	0.00 - 0.002	0.000	0.000	2500	1000
Step 7	JoyLite	G8	0.00 - 0.05	0.00 - 0.002	0.000	0.000	2500	1000











PARAMETERS TABLE
for 5 metal + 1 rubber wheels

STEP	TYPE	GRIT	OS Offset		OM Over Material		rpm	feed
			mm	inches	mm	inches		
Step 1	SEG	G1	-	-	0.55	0.022	5000	2500
Step 2	CONT.	G3	0.30	0.012	0.25	0.010	5000	3000
Step 3	CONT.	G4	0.15	0.006	0.10	0.004	4500	3000
Step 4	CONT.	G5	0.10	0.004	0.00	0.000	4500	2500
Step 5	CONT. Slotted	G6 XF	0.00 - 0.05	0.00 - 0.002	0.000	0.000	4500	2000
Step 6	JoyLite	G8	0.00 - 0.05	0.00 - 0.002	0.000	0.000	2500	1000

REFERENCE CHARTS

profiling











PARAMETERS		
60 / 80 series Smaller diameter: 60mm / 80mm (Super Z) Bore: 35mm		
	SUPER Z - G0	
	Spindle Rotation (rpm)	5000
	Feed Rate (mm/min)	2500-3800
	Stock removal (mm)	to profile
	EVO™ METAL - G1	
	Spindle Rotation (rpm)	4500
	Feed Rate (mm/min)	2500
	Stock removal (mm)	to profile
	EVO™ METAL - G3	
	Spindle Rotation (rpm)	5000
	Feed Rate (mm/min)	3000
	Stock removal (mm)	0.30
	EVO™ METAL - G4	
	Spindle Rotation (rpm)	5000
	Feed Rate (mm/min)	3000
	Stock removal (mm)	0.15
	EVO™ METAL - G5	
	Spindle Rotation (rpm)	4500
	Feed Rate (mm/min)	2500
	Stock removal (mm)	0.10
	EVO™ METAL - G6 XF	
	Spindle Rotation (rpm)	4500
	Feed Rate (mm/min)	2000
	Stock removal (mm)	
	JoyLite™ RUBBER - G6	
	Spindle Rotation (rpm)	2500
	Feed Rate (mm/min)	1000
	Stock removal (mm)	0-0.05
	JoyLite™ RUBBER - G7	
	Spindle Rotation (rpm)	2500
	Feed Rate (mm/min)	1000
	Stock removal (mm)	0-0.05
	JoyLite™ RUBBER - G8	
	Spindle Rotation (rpm)	2500
	Feed Rate (mm/min)	1000
	Stock removal (mm)	0-0.05









PARAMETERS		
40 series Smaller diameter: 40mm Bore: 20mm		
	SUPER Z - G0	
	Spindle Rotation (rpm)	5200
	Feed Rate (mm/min)	800-1000
	Stock removal (mm)	to profile
	EVO™ METAL - G1	
	Spindle Rotation (rpm)	5200
	Feed Rate (mm/min)	800-1000
	Stock removal (mm)	to profile
	EVO™ METAL - G3	
	Spindle Rotation (rpm)	5200
	Feed Rate (mm/min)	1000-1200
	Stock removal (mm)	0.30
	EVO™ METAL - G4	
	Spindle Rotation (rpm)	5200
	Feed Rate (mm/min)	1000-1500
	Stock removal (mm)	0.15
	EVO™ METAL - G5	
	Spindle Rotation (rpm)	5200
	Feed Rate (mm/min)	1000-1500
	Stock removal (mm)	0.10
	EVO™ METAL - G6 XF	
	Spindle Rotation (rpm)	5200
	Feed Rate (mm/min)	1000-1500
	Stock removal (mm)	
	JoyLite™ RUBBER - G6	
	Spindle Rotation (rpm)	2700
	Feed Rate (mm/min)	700
	Stock removal (mm)	0-0.005
	JoyLite™ RUBBER - G7	
	Spindle Rotation (rpm)	2700
	Feed Rate (mm/min)	700
	Stock removal (mm)	0-0.05
	JoyLite™ RUBBER - G8	
	Spindle Rotation (rpm)	2700
	Feed Rate (mm/min)	700
	Stock removal (mm)	0-0.05

60 and 40 series configurations	Super Z	EVO™ MET G1	EVO™ MET G3	EVO™ MET G4	EVO™ MET G5	EVO™ MET G6 XF	JLT RUB G6	JLT RUB G7	JLT RUB G8
Seq 1 (4 met. + 3 resin)	(opt.)	+	+	+	+	-	+	+	+
Seq 2 (3 met. + 3 resin)	(opt.)	+	+	-	+	-	+	+	+
Seq 3 (5 met. + 2 resin)	(opt.)	+	+	+	+	+	-	+	+
Seq 4 (5 met. + 1 resin)	(opt.)	+	+	+	+	+	-	-	+

REFERENCE CHARTS






















profiling

PARAMETERS		
20 series Smaller diameter: 20mm Bore: 1/2 GAS		
	SUPER Z - G0 (Ø 23x40mm)	
	Spindle Rotation (rpm)	6500
	Feed Rate (mm/min)	800
	Stock removal (mm)	to profile
	EVO™ METAL - G1	
	Spindle Rotation (rpm)	6000
	Feed Rate (mm/min)	800-1000
	Stock removal (mm)	to profile
	EVO™ METAL - G3	
	Spindle Rotation (rpm)	6000
	Feed Rate (mm/min)	800-1000
	Stock removal (mm)	0.25
	EVO™ METAL - G4	
	Spindle Rotation (rpm)	6000
	Feed Rate (mm/min)	800-1000
	Stock removal (mm)	0.20
	EVO™ METAL - G5	
	Spindle Rotation (rpm)	6000
	Feed Rate (mm/min)	800-1000
	Stock removal (mm)	0.10
	EVO™ METAL - G6 XF	
	Spindle Rotation (rpm)	6000
	Feed Rate (mm/min)	600-800
	Stock removal (mm)	
	JoyLite™ RUBBER - G6	
	Spindle Rotation (rpm)	2800
	Feed Rate (mm/min)	600
	Stock removal (mm)	0-00-0.05
	JoyLite™ RUBBER - G7	
	Spindle Rotation (rpm)	2800
	Feed Rate (mm/min)	600
	Stock removal (mm)	0-00-0.05
	JoyLite™ RUBBER - G8	
	Spindle Rotation (rpm)	2800
	Feed Rate (mm/min)	600
	Stock removal (mm)	0-00-0.05

PARAMETERS		
10 series Smaller diameter: 10mm Fitting: 1/2 GAS (Cylindrical upon req.)		
	SUPER Z - G0 (Ø 18x40mm)	
	Spindle Rotation (rpm)	6500
	Feed Rate (mm/min)	250
	Stock removal (mm)	to profile
	ELECTROPLATED - G1	
	Spindle Rotation (rpm)	7000
	Feed Rate (mm/min)	500-700
	Stock removal (mm)	0.30
	ELECTROPLATED - G2	
	Spindle Rotation (rpm)	7000
	Feed Rate (mm/min)	500-700
	Stock removal (mm)	0.15
	ELECTROPLATED - G3	
	Spindle Rotation (rpm)	7000
	Feed Rate (mm/min)	500-700
	Stock removal (mm)	0.10
	JoyLite™ RUBBER - G6	
	Spindle Rotation (rpm)	4000
	Feed Rate (mm/min)	400-600
	Stock removal (mm)	0-00-0.05
	JoyLite™ RUBBER - G7	
	Spindle Rotation (rpm)	4000
	Feed Rate (mm/min)	400-600
	Stock removal (mm)	0-00-0.05
	JoyLite™ RUBBER - G8	
	Spindle Rotation (rpm)	4000
	Feed Rate (mm/min)	400-600
	Stock removal (mm)	0-00-0.05

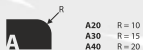
REALLY DELICATE AND FRAGILE TOOLS !

10 series configuration						
Super Z	ELE G1	ELE G2	ELE G3	JLT G6	JLT G7	JLT G8
(opt.)						

20 series configurations	Super Z	EVO™ MET G1	EVO™ MET G3	EVO™ MET G4	EVO™ MET G5	EVO™ MET G6 XF	JLT RUB G6	JLT RUB G7	JLT RUB G8
 Seq 1 (4 met. + 3 resin)	(opt.)	 +	 +	 +	 +	-	 +	 +	 +
Seq 2 (3 met. + 3 resin)	(opt.)	 +	 +	-	 +	-	 +	 +	 +
Seq 3 (5 met. + 2 resin)	(opt.)	 +	 +	 +	 +	 +	-	 +	 +

STANDARD PROFILES

profiling **prf**



A20 R = 10
A30 R = 15
A40 R = 20



E20 L1 = 15 L2 = 5
E30 L1 = 20 L2 = 10
E40 L1 = 20 L2 = 20



EG30 R1 = 7.5 R2 = 15
EG40 R1 = 9.5 R2 = 19



H20 R = 15 L = 5
H30 R = 25 L = 5
H40 R = 30 L = 10



LV30 R1 = 18 R2 = 10 L = 2.5
LV40 R1 = 24 R2 = 12 L = 6



OG20 R1 = 20 R2 = 6
OG30 R1 = 30 R2 = 9



V20 R = 10
V30 R = 15
V40 R = 20



ZS30 L1 = 7 L2 = 21
ZS40 L1 = 7 L2 = 31



3-20 R = 6.5
3-30 R = 10
3-40 R = 12.5



R = 9.5
R = 11
R = 11



B20 R = 20
B30 R = 30
B40 R = 40



F20 R = 10 L = 20
F30 R = 15 L = 30
F40 R = 20 L = 40



FV30 R1 = 7.5 R1 = 7.5 R1 = 7.5
FV40 R1 = 9.65 R1 = 7.97 R1 = 9.65
FV50 R1 = 15 R1 = 15 R1 = 11



I20 R = 5 L = 6
I30 R = 5 L = 12



M20 R1 = 14 R2 = 6
M30 R1 = 18 R2 = 11
M40 R1 = 25 R2 = 12



Q20 R = 6.5
Q30 R = 10
Q40 R = 13



Z20 R = 20
Z30 R = 30
Z40 R = 40



1-30 R = 23
1-40 R = 25



4-20 L1 = 2.5 L2 = 15
4-40 L1 = 2.5 L2 = 25
4-40 L1 = 2.5 L2 = 35



D20 R = 5.2 $\alpha = 30^\circ$
D30 R = 7.5 $\alpha = 30^\circ$
D40 R = 11.4 $\alpha = 33^\circ$



FB30 R = 8 L = 12
FB40 R = 12 L = 16



FZ30 R = 10 L = 10
FZ40 R = 10 L = 20



L20 R = 10 L = 10
L30 R = 15 L = 15



O20 R = 8 L = 4
O30 R = 12.5 L = 5
O40 R = 17 L = 6



T20 R = 3
T30 R = 5
T40 R = 5



ZR20 R = 5
ZR30 R = 5
ZR40 R = 6



2-30 R = 15

other profiles could be available on request



L1 = 19
L2 = 9.5
L3 = 4.5



R = 10
R = 10
R = 14.25
R = 19.5

J SERIES PROFILES

profiling **J**



FZ30J
R = 10 mm
L = 30 mm
J = 2 mm



ZS30J
L1 = 10 mm
L = 30 mm
J = 2 mm



FZ40J
R = 10 mm
L = 40 mm
J = 2 mm



A30J
R = 15 mm
L = 30 mm
J = 2 mm



B30J
R = 30 mm
L = 30 mm
J = 2 mm



ZS40J
L1 = 5 mm
L = 30 mm
J = 2 mm



A30J R10
R = 10 mm
L = 30 mm
J = 2 mm



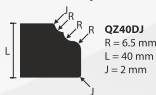
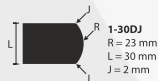
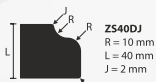
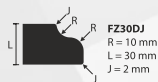
H30J
R = 25 mm
L = 30 mm
J = 2 mm



GR
ES
MR

DJ SERIES PROFILES

profiling

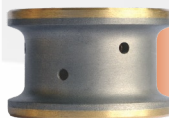


VG SERIES PROFILES

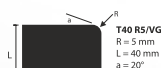
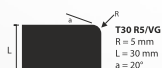
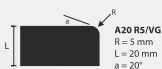
profiling



VG Series wheels feature a **more open profile**



Standard profile



POLISHING DISCS FOR MARBLE, GRANITE & ES



for MARBLE

Ø250 - 10" Magnetic Fitting (Ø200 - 8" available)



for GRANITE & ENG. STONE

Ø250 - 10" Magnetic Fitting (Ø200 - 8" available)



Magnetic Fitting

CODE	TYPE	GRIT	FITTING
ACS200A3 *	Metallic Plat. Marble	2	B50+6H
ALRMCBMXT00060	Resin Plat. Marble	60	MAGN.
ALRMCBMXT00120	Resin Plat. Marble	120	MAGN.
ALRMCBMXT00220	Resin Plat. Marble	220	MAGN.
ALRMCBMXTL0400	Resin Plat. Marble	400	MAGN.
ALRMCBMXTL0800	Resin Plat. Marble	800	MAGN.
ALRMCBMXTL02000	Resin Plat. Marble	2000	MAGN.
ALRMCBMTL05000	Resin Plat. Marble	5000	MAGN.
ALRMCBMMR00LUX	Resin Plat. Marble	LUX	MAGN.

Magnetic Fitting

CODE	TYPE	GRIT	FITTING
ACS200A2 *	Metallic Plat. GR & ES	2	B50+6H
ALRMCBMGE00060	Resin Plat. GR & ES	60	MAGN.
ALRMCBMGE00120	Resin Plat. GR & ES	120	MAGN.
ALRMCBMGE00220	Resin Plat. GR & ES	220	MAGN.
ALRMCBMGE00400	Resin Plat. GR & ES	400	MAGN.
ALRMCBMGE00800	Resin Plat. GR & ES	800	MAGN.
ALRMCBMGE01800	Resin Plat. GR & ES	1800	MAGN.
ALRMCBMGE00LUX	Resin Plat. GR & ES	BUFF	MAGN.

for MARBLE

Ø250 - 10" Velcro Fitting (Ø200 - 8" available)



for GRANITE & ENG. STONE

Ø250 - 10" Velcro Fitting (Ø200 - 8" available)



Velcro Fitting

CODE	TYPE	GRIT	FITTING
ACS200A3 *	Metallic Plat. Marble	2	B50+6H
ALRMCBVXT00060	Resin Plat. Marble	60	VELCRO
ALRMCBVXT00120	Resin Plat. Marble	120	VELCRO
ALRMCBVXT00220	Resin Plat. Marble	220	VELCRO
ALRMCBVXTL0400	Resin Plat. Marble	400	VELCRO
ALRMCBVXTL0800	Resin Plat. Marble	800	VELCRO
ALRMCBVTL02000	Resin Plat. Marble	2000	VELCRO
ALRMCBVTL05000	Resin Plat. Marble	5000	VELCRO
ALRMCBVMR00LUX	Resin Plat. Marble	LUX	VELCRO

Velcro Fitting

CODE	TYPE	GRIT	FITTING
ACS200A2 *	Metallic Plat. GR & ES	2	B50+6H
ALRMCBVGE00060	Resin Plat. GR & ES	60	VELCRO
ALRMCBVGE00120	Resin Plat. GR & ES	120	VELCRO
ALRMCBVGE00220	Resin Plat. GR & ES	220	VELCRO
ALRMCBVGE00400	Resin Plat. GR & ES	400	VELCRO
ALRMCBVGE00800	Resin Plat. GR & ES	800	VELCRO
ALRMCBVGE01800	Resin Plat. GR & ES	1800	VELCRO
ALRMCBVGE00LUX	Resin Plat. GR & ES	BUFF	VELCRO

POLISHING DISCS FOR MARBLE, GRANITE & ES



for MARBLE



for GRANITE & ENG. STONE



MR



GR

CODE	TYPE	GRIT
ALSFABNO	Metallic FRANKFURT	80/100
ALRFC14XT00060	GIOTTO T Resin Frankfurt	60
ALRFC14XT00120	GIOTTO T Resin Frankfurt	120
ALRFC14XT00220	GIOTTO T Resin Frankfurt	220
ALRFC14XTL0400	GIOTTO T Resin Frankfurt	400
ALRFC14XTL0800	GIOTTO T Resin Frankfurt	800
CLR14ZLL	GIOTTO LUX FRANKFURT	5 Extra

(Advised Sequence)

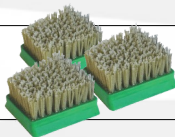
CODE	TYPE	GRIT
ALSF061H	Metallic FRANKFURT	120
ALRFC54GE00060	GIOTTO Resin FRANKFURT	60
ALRFC54GE00120	GIOTTO Resin FRANKFURT	120
ALRFC54GE00220	GIOTTO Resin FRANKFURT	220
ALRFC54GE00400	GIOTTO Resin FRANKFURT	400
ALRFC54GE00800	GIOTTO Resin FRANKFURT	800
ALRFC54GE01800	GIOTTO Resin FRANKFURT	1800
ALRFC54GE00LUX	LUX FRANKFURT	BUFF

(Advised Sequence)



Scan this QRcode
to view the
Working Parameters

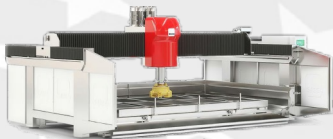
BRUSHES
for GRANITE AND MARBLE
w/ 3 or Brushes



CODE	TYPE	GRIT
CLR2F036	DIAMOND Brush	36
CLR2F060	DIAMOND Brush	60
CLR2H120	SILICON Brush	120
CLR2H240	SILICON Brush	240



GIOTTO



for Single Head Machines

MARBLE Polishing

Tools sequence for Single Head machines



GIOTTO D/S



GIOTTO M



GIOTTO T



S EXTRA



CLEANER

TYPE	GRITS
FRANKFURT GIOTTO D/S MET.	#6
FRANKFURT GIOTTO M	#5
FRANKFURT GIOTTO T	120 / 220 / 400 / 800 / 1800
FRANKFURT GIOTTO S EXTRA	5X
FRANKFURT GIOTTO CLEANER	-



MARBLE Honed

Tools sequence for Single Head machines



GIOTTO D&S



GIOTTO M / T



BRUSH SIC

TYPE	GRITS
FRANKFURT GIOTTO D/S MET.	#6
FRANKFURT GIOTTO M SERIES	#5
FRANKFURT GIOTTO T SERIES	120/220
FRANKFURT BRUSH SIC	180/240



MARBLE Leather

Tools sequence for Single Head machines



GIOTTO M



BRUSH DIA



BRUSH SIC

TYPE	GRITS
FRANKFURT GIOTTO M SERIES	#5
FRANKFURT BRUSH DIAMOND	36 / 46 / 60 / 120 / 220
FRANKFURT BRUSH SIC	180 / 240 / 320



GRANITE Polishing

Tools sequence for Single Head machines



GIOTTO BLUE



GIOTTO B-REX



GIOTTO TOP-LUX

TYPE	GRITS
FICKERT GIOTTO BLUE METALLIC	BLUE
FICKERT GIOTTO B-REX	60 / 120 / 220 / 400 / 800 / 1800
FICKERT GIOTTO TOP LUX	LUX



TOOLS FOR SINGLE HEAD MACHINES



GRANITE Honed

Tools sequence for Single Head machines



GIOTTO BLUE



GIOTTO B-REX



BRUSH SIC

TYPE	GRITS
FICKERT GIOTTO BLUE METALLIC	BLUE
FICKERT GIOTTO B-REX	60 / 120 / 220
FICKERT BRUSH SIC	180 / 240



GRANITE Leather

Tools sequence for Single Head machines



GIOTTO B-REX



BRUSH DIA



BRUSH SIC

TYPE	GRITS
FICKERT GIOTTO B-REX	#5
FICKERT BRUSH DIAMOND	36 / 46 / 60 / 120 / 220
FICKERT BRUSH SIC	180 / 240 / 320

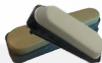


ENGINEERED STONE & QUARTZ Polishing

Tools sequence for Single Head machines



GIOTTO BLUE



GIOTTO QUARTZ M/T

TYPE	GRITS
FICKERT GIOTTO BLUE METALLIC	BLUE
FICKERT GIOTTO QUARTZ M	120 / 220 / 400
FICKERT GIOTTO QUARTZ T	800 / 1800 / 3500

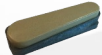


ENGINEERED STONE & QUARTZ Honed

Tools sequence for Single Head machines



GIOTTO BLUE



GIOTTO QUARTZ M



BRUSH SIC

TYPE	GRITS
FICKERT GIOTTO BLUE METALLIC	BLUE
FICKERT GIOTTO QUARTZ M	120 / 220
FICKERT BRUSH SIC	180 / 240



ENGINEERED STONE & QUARTZ Leather

Tools sequence for Single Head machines



GIOTTO QUARTZ M



BRUSH DIA



BRUSH SIC

TYPE	GRITS
FICKERT GIOTTO QUARTZ M	120 / 220
FICKERT BRUSH DIAMOND	36 / 46 / 60 / 120 / 220
FICKERT BRUSH SIC	180 / 240 / 320



NICOLAI

D I A M A N T



NICOLAI

NORTH AMERICA

Quickest Retrue Service in the Country



Expert Technicians

Grand Rapids, Michigan

Extra Life FOR YOUR WHEELS
REBALANCED & REBORN IF NECESSARY

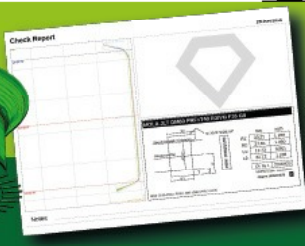
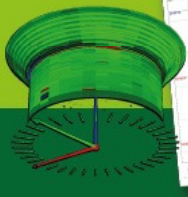
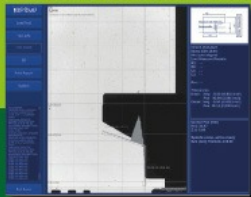
USED → **RETRUED**



TEN BUSINESS DAYS TURN AROUND

3D MEASURING SYSTEM

Highest accuracy in Measures & Reports



For Unsurpassed after sales service ...

Call "EnServ" @ 855 448 7827

Mon - Fri - 8:00am - 5:30pm

sales@nicolai-na.com

enserv@nicolai-na.com



GIOTTO

enhance your colors

Diamond Tools for Marble Surface Polishing



[www.nicolaigi[□]tto.com](http://www.nicolaigi[□]tto.com)

MANUFACTURED BY

 **AMERICAN ABRASIVE
TECHNOLOGY INC.**

TERMS & CONDITIONS

PAYMENT TERMS

- ALL PAYMENTS have to be made in the currency indicated on the invoice.
- All invoices are due upon receipt unless stated definitely.
- Outstanding Invoice 30 days or older will be charged 1.5% interest monthly.
- Payment can be done through Bank, our Banks are indicated on the order confirmation. Nicolai North America also accepts major credit cards.
- Orders on account with a past due balance will be shipped only with Credit Card payment or advance transfer.

ORDERING

- Orders can be placed over the phone, by fax, by mail. Customer orders need to be accepted by Nicolai North America with the issue of an Order Confirmation which will state all the Sales conditions.

SHIPPING

- Unless a preference is indicated by the customer and it is accepted by Nicolai North America will ship 'best way'.
- If Nicolai is unable to fill an entire order, partial shipment will be made, unless "Ship Complete" is indicated on order.

FREIGHT

- Customers must inspect shipment immediately.
- Damages or shortages must be reported to the carrier at once, and noted damage on Bill of Lading.
- If package arrive damaged, notify to carrier immediately. Save all packing and cartons for the carrier to inspect.
- Nicolai must be notified of any shortages within 24 Hours of receipt.
- Freight is Ex-works Grand Rapids unless differently communicated by Nicolai Diamant.
- Additional charges may apply to a factory direct shipment.
- INTERNATIONAL ORDERS: Nicolai welcomes orders from all over the world. Freight Charges are dependent upon weight and dimension of package. A minimum order \$100.00 (USD funds) is required. All duty is paid by the customer.

PRICE CHANGES

- Prices and availability are subject to change without notice.
- Quoted prices are valid for 10 days,
- Nicolai reserves the right to correct pricing errors on any or all print or any electronic media.
- Nicolai reserves the right to limit quantities.

RETURNS

- 30 Day Return Policy for most unused items. Special Orders or customized products cannot be returned. Additional restocking fees may apply.
- All returns need a Return goods Authorization Number (RGA#) from Nicolai. To receive an RGA# contact our main commercial office: sales@nicolai-na.com.
- Returned items must be unused, missing no parts, and be in a resalable condition to receive full credit.
- Custom tools or private label tools are not returnable.

If customer prefers a refund, payment will be in the same form as original payment.

- Items eligible to be returned must be postmarked within 30 days of invoiced date or 45 days from shipping. Items returned after the above set time period, or in non-resalable condition, including marked or damaged manufacturer original packaging, will not be credited. These packages need to be kept in new and resalable condition.
- Once you have received a RGA number, write the RGA number on the packing slip and lg.

Then ship the item to:

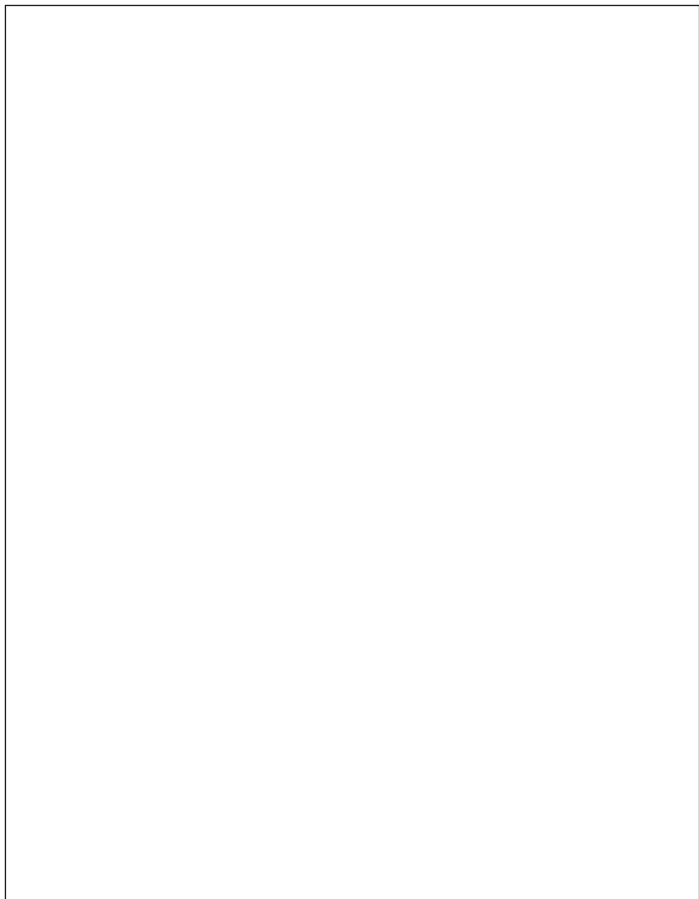
Nicolai North America
IT DISTRIBUTING Co. Inc.
Attn: [Returns RGA#](#)
Suite #102
3480 Broadmor SE, Grand Rapids
MI 49512

- Items returned without a RMA # will be subject to a restocking fee of 20% of the sale price.
- Return of non-stock items will be subject to manufacturer's restocking fee.
- NO RETURNS ON PRINTED MATERIALS, VIDEOS, DVDs, OR SOFTWARE.
- Replacement items will be billed to customer account until credit is issued when the item is received by Nicolai.
- Please note that we will refund shipping costs only if the return is a result of our error,
- All warranty claim are subject to approval for credit by the manufacturer.
- Shipping costs are subject to manufacturers policy.

COMMUNICATION WARRANTY

PHONE NUMBER: +1 616 855 1550 - FAX NUMBER: +1 616 588 6209 - EMAIL: sales@nicolai-na.com - WEBSITE: www.nicolaidiamant.com

SKETCHES



SKETCHES





NICOLA1 NORTH AMERICA
DISTRIBUTING Co., Inc.

Suite #102,
3480 Broadmoor SE/ Grand Rapids,
MI 49512

+1 616 855 1150
sales@nicola1-na.com

DISTRIBUTED BY:

Levi Sink Co

PO Box 8 | 202 Williams Street

Elberton, GA 30635

www.levisinkco.com

706-213-7715

